



ASTC/USITT Renovation Challenge
Oberlin College and Conservatory



Team Members

Nelson Gutsch - *senior, Theater*

Andrew McCracken - *junior, Theater & French*

Charlotte Stephenson - *junior, Theater & German*

Alexis Merane Hart - *sophomore, Sustainable Architecture & Viola*

Lorelei McCarthy - *sophomore, Theater & Economics*

Sam Hechler - *sophomore, Theater*

Advisors

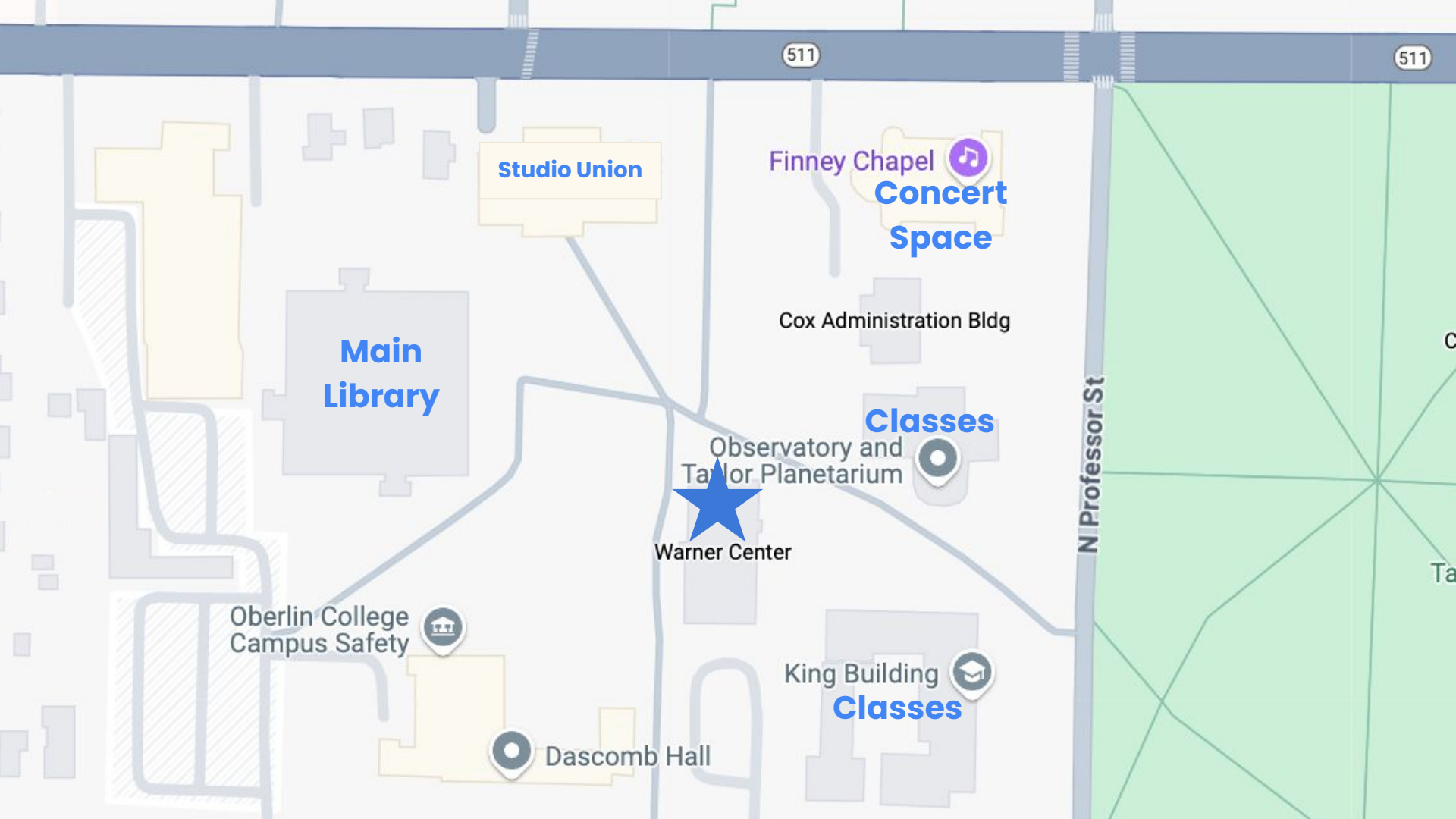
Faculty Advisor: Eric Steggall, *Managing Director of Theater, Dance, and Opera*

ASTC Project Advisor: Howard Glickman, *Apeiro Design*



Warner Center





511

511

Studio Union

Finney Chapel
Concert Space

Main Library

Cox Administration Bldg

Classes

Observatory and Taylor Planetarium

Warner Center

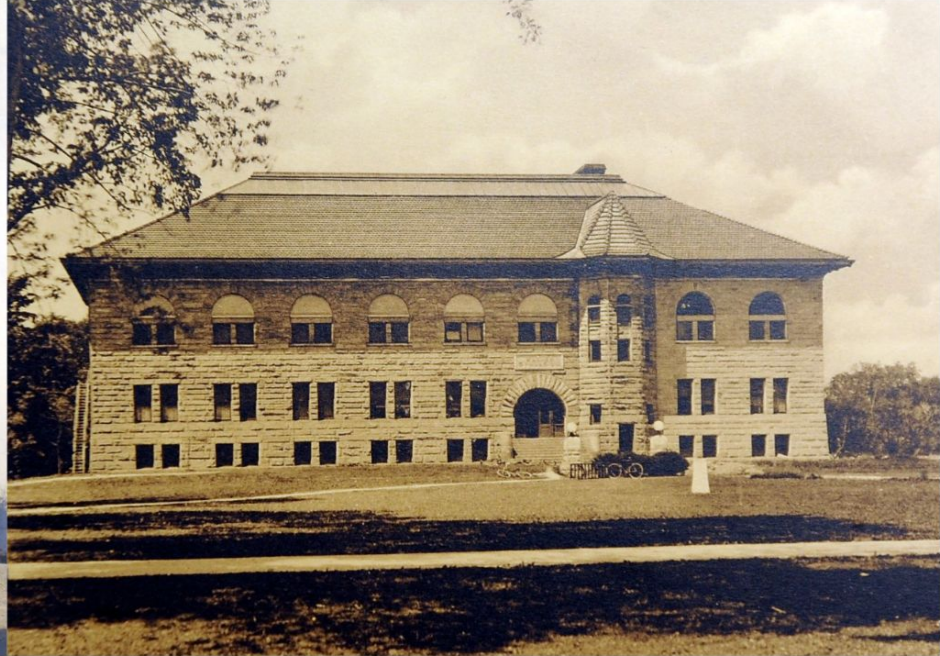
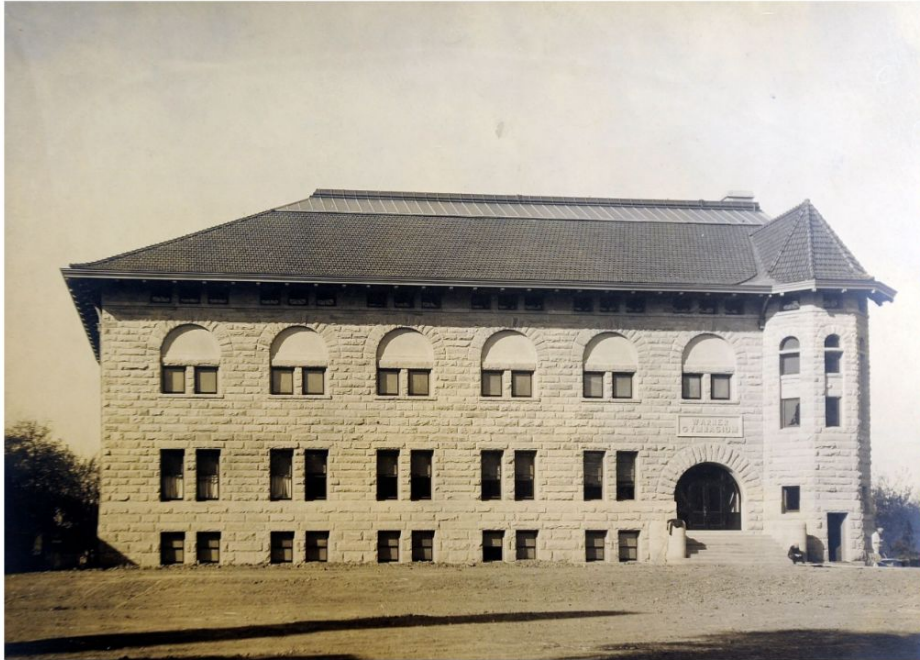
Oberlin College Campus Safety

Dascomb Hall

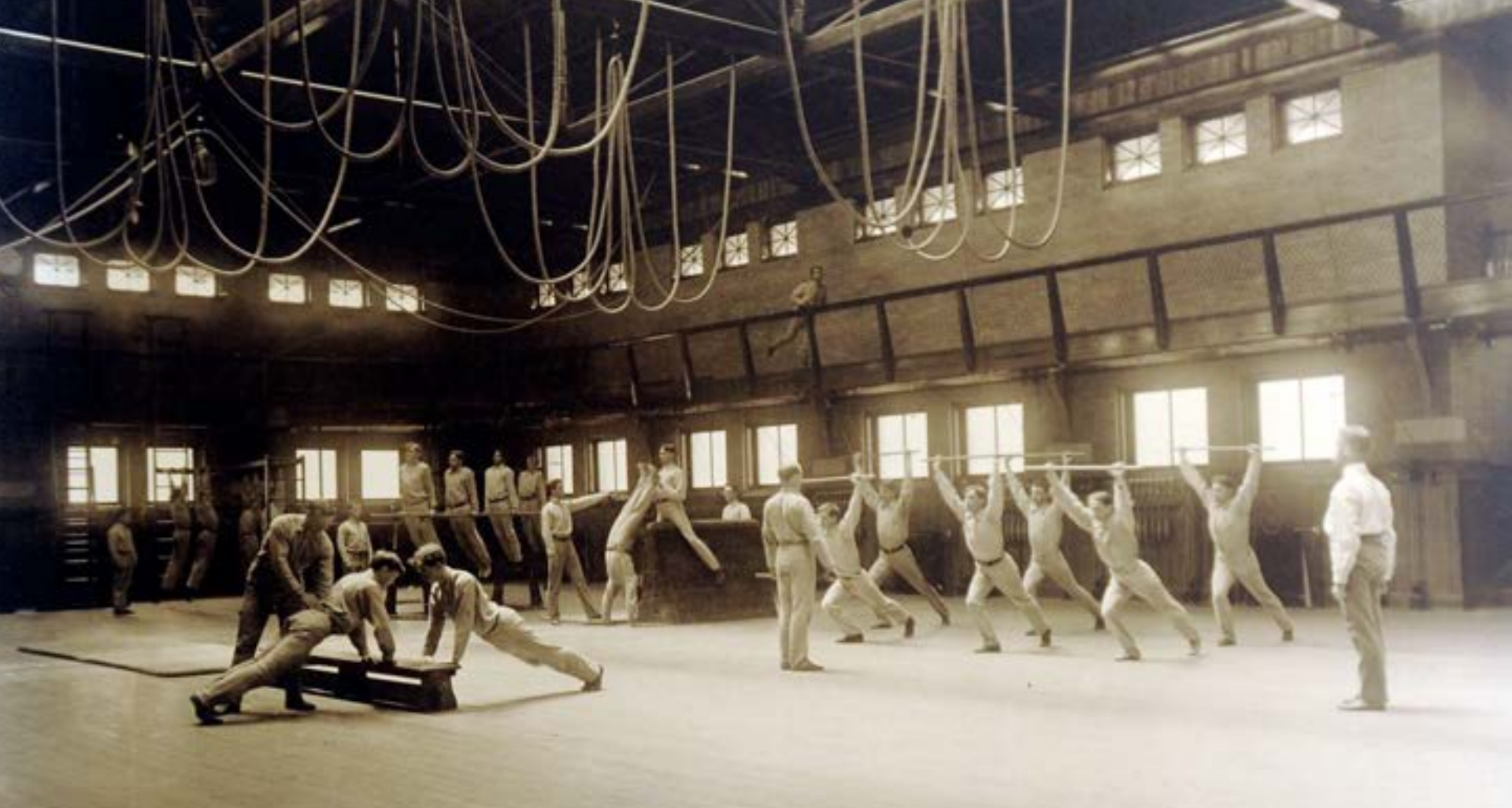
King Building
Classes

N Professor St

Warner Gymnasium, opened 1901



Warner Center before and after north extension added in 1912, east view.



Warner Men's Gymnasium - current Warner Main

Project Scope

Accessibility

Sustainability

Performance Space

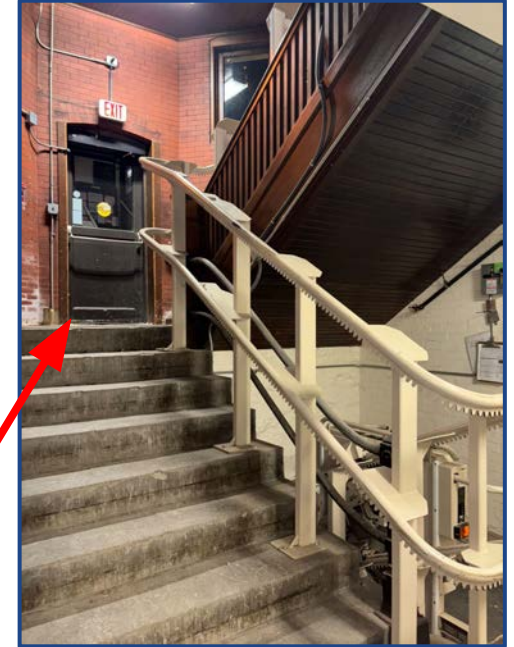
Entrances, Seating, Floor, Booth, Sound System, Lighting System, Running Track, Storage

Building Usability

Traffic Flow, Studio Space, Student Space, Office Space, Bathrooms, Basement

Aesthetic Continuity

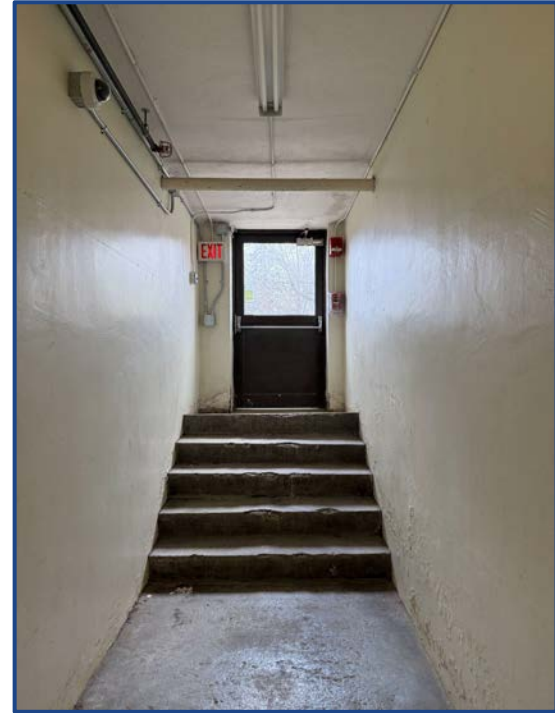
Accessibility – Entrance Problems



Accessible, front entrance has ramp **but** does not open to main level and is always locked.

Instead, door opens to stairwell in between basement and first floor.

Accessibility – Entrance Problems cont.



Back entrance has ramp but opens to stairs leading to basement level.

Accessibility – Code Violations

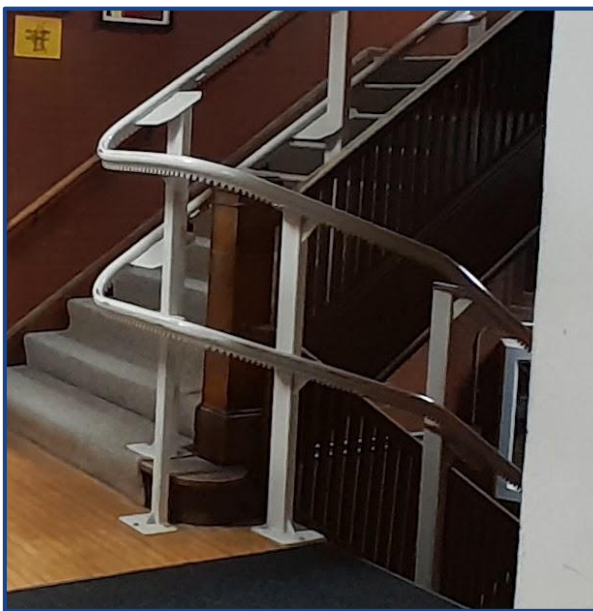
Existing Chair Lift



Chair lift is stored at the basement level, and cannot be accessed by an individual wheelchair-bound person.

Violates ADA code 410.1

Handrail



Handrail blocked by chair lift.

Violates ADA code 505.6

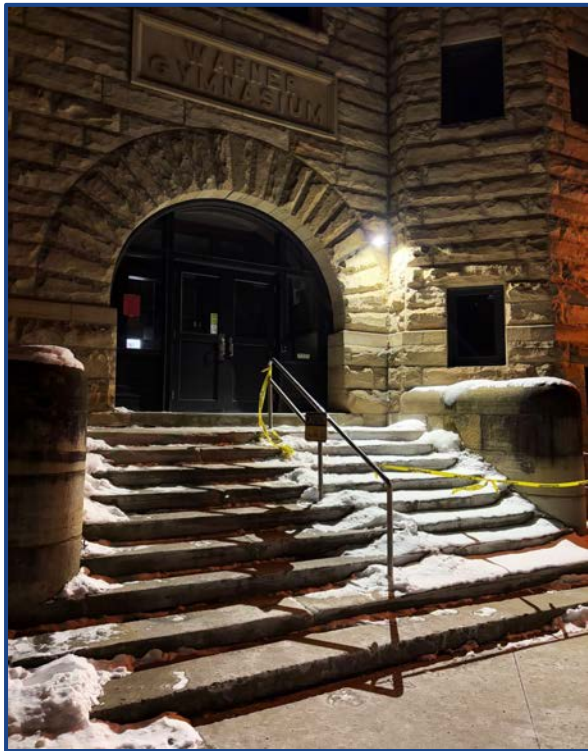
Narrow Hallways



Too-narrow hallway width.

Violates ADA code 305.3

Accessibility – Entrance Solutions

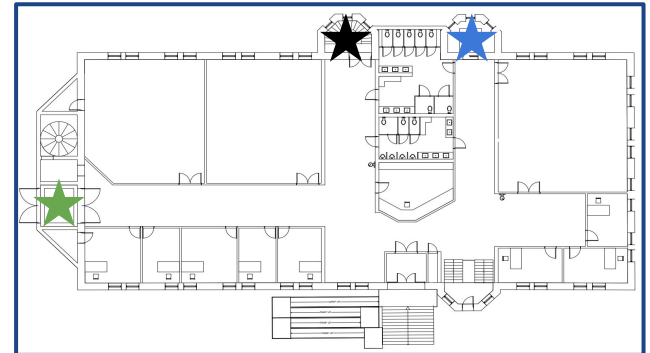
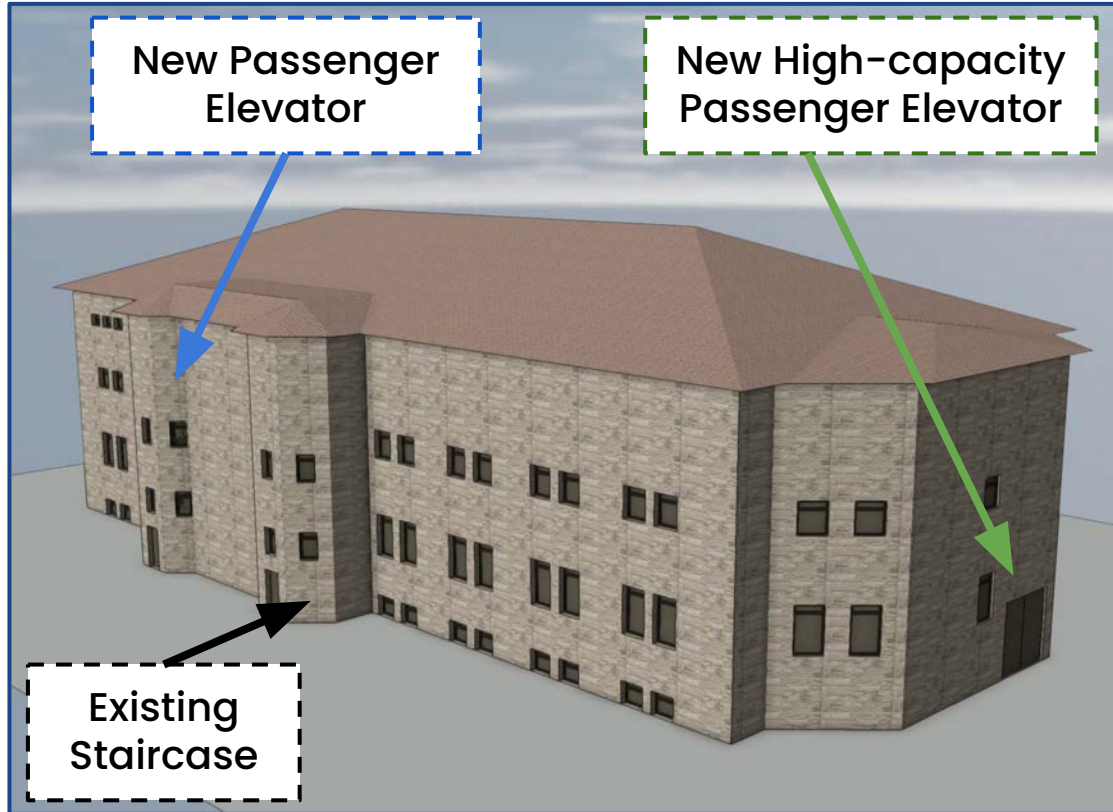


Current primary entrance



Proposed staircase renovation with ramp addition

Accessibility – Solutions



Sustainability – Problems



Currently, Warner Center has no ventilation system and the HVAC is original. Single-paned windows with imperfect fittings leak cold air in, while an uninsulated roof lets warmth out. Both these factors dramatically impact building energy efficiency.

Sustainability – Solutions

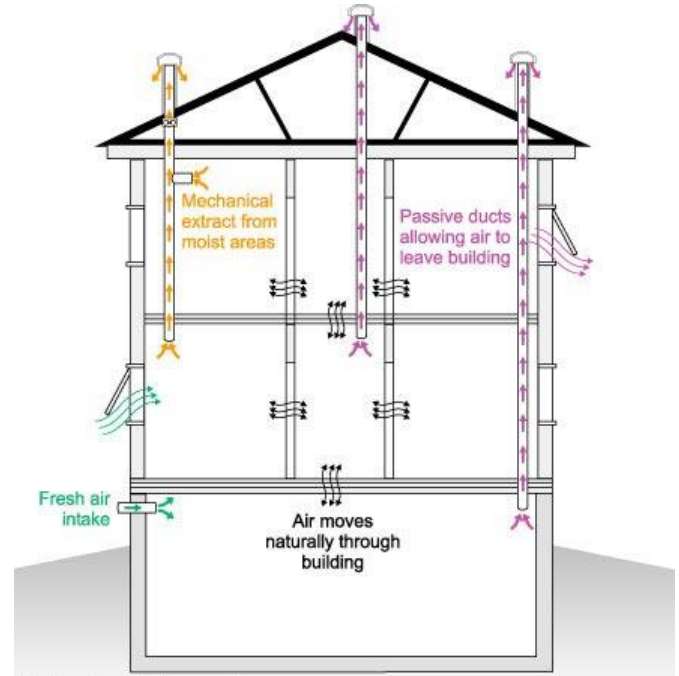


LEED

LEADERSHIP IN ENERGY & ENVIRONMENTAL DESIGN

Most of the solutions to the sustainability issues the building faces are centered around meeting LEED certification standards.

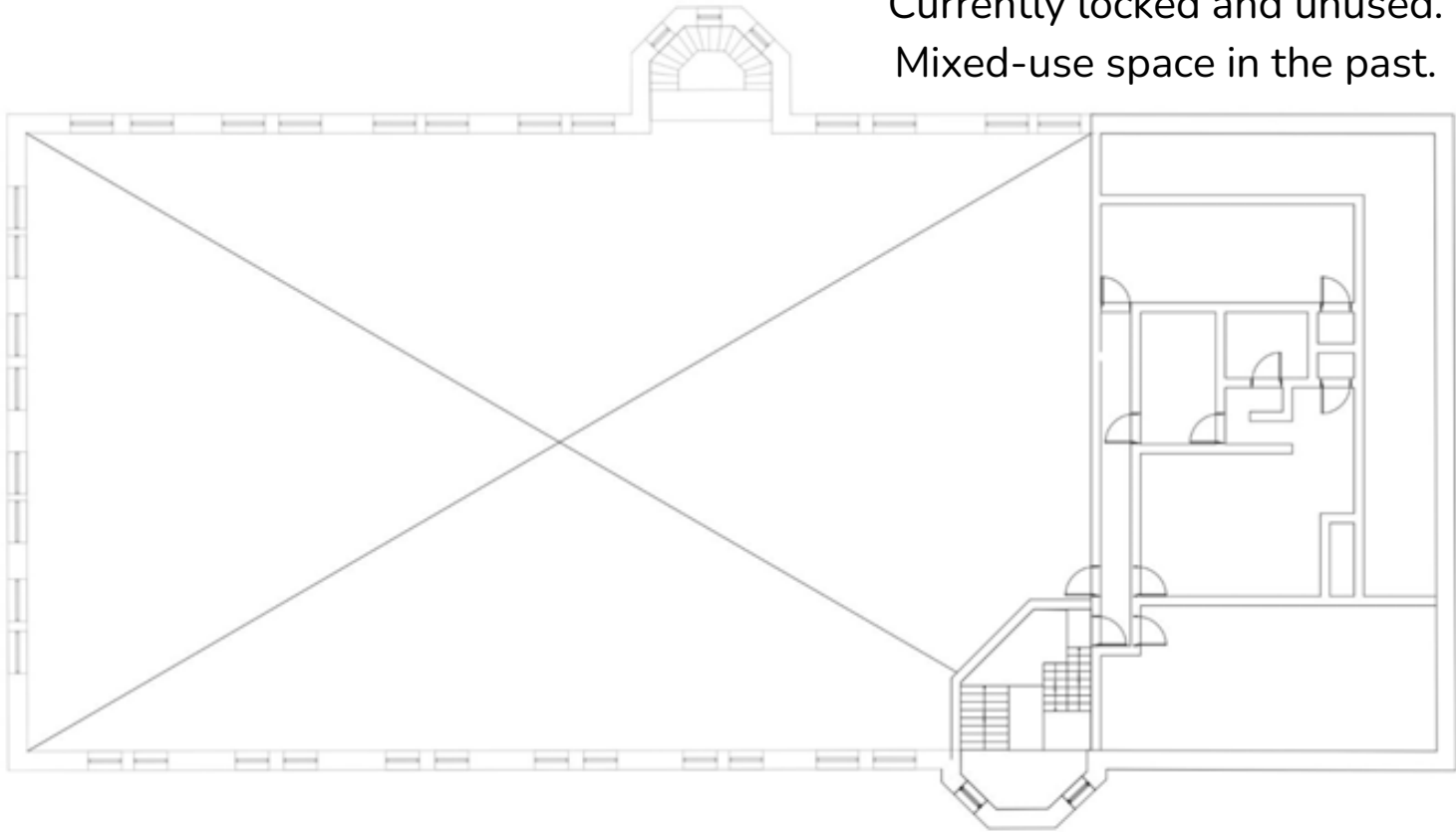
The renovation would include air flow ducts, dust extraction, geothermal heat pumps, and a new HVAC system, located on the third floor.



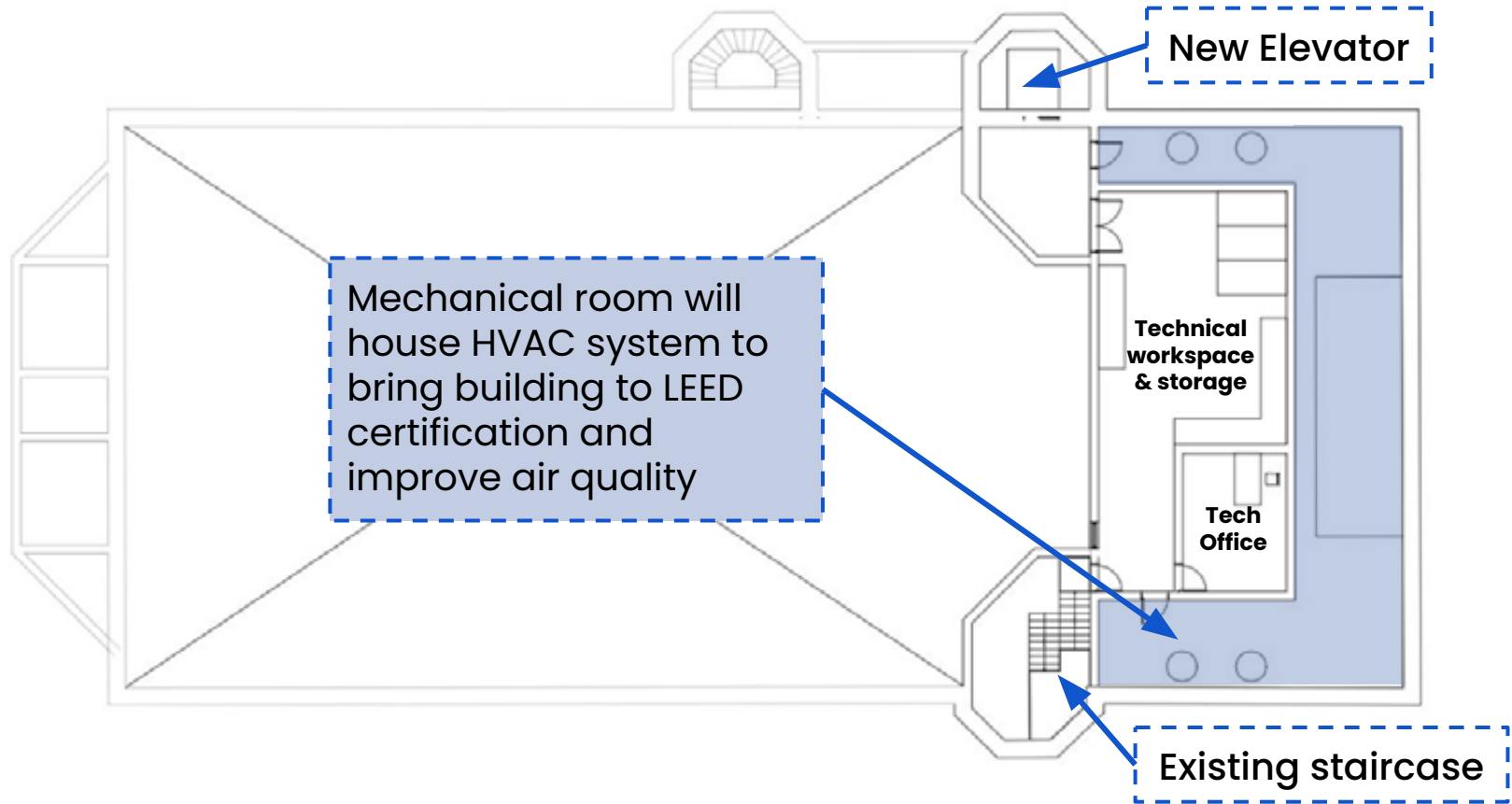
Example of a natural ventilation system
Image credit: Hourigan Group

Third Floor Now

Currently locked and unused.
Mixed-use space in the past.



Third Floor Renovation



Warner Main – Problems

Entrances and Backstage

Seating

Floor

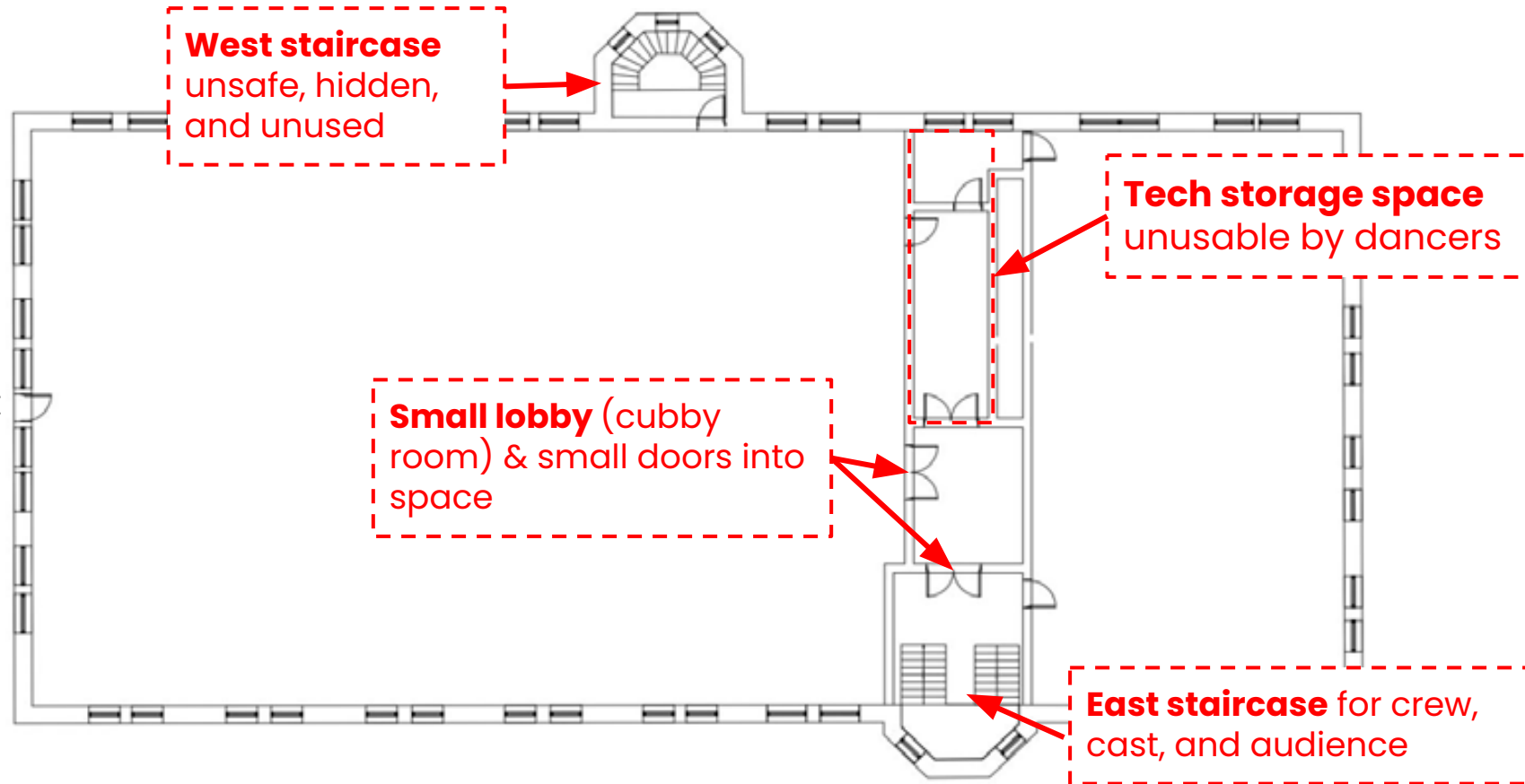
Booth and Sound System

Lighting System

Storage



Current Warner Main Entrances



Current Warner Main Entrances



East entrance to Warner Main via small lobby/cubby room



View of west staircase

Warner Main Entrance Solutions

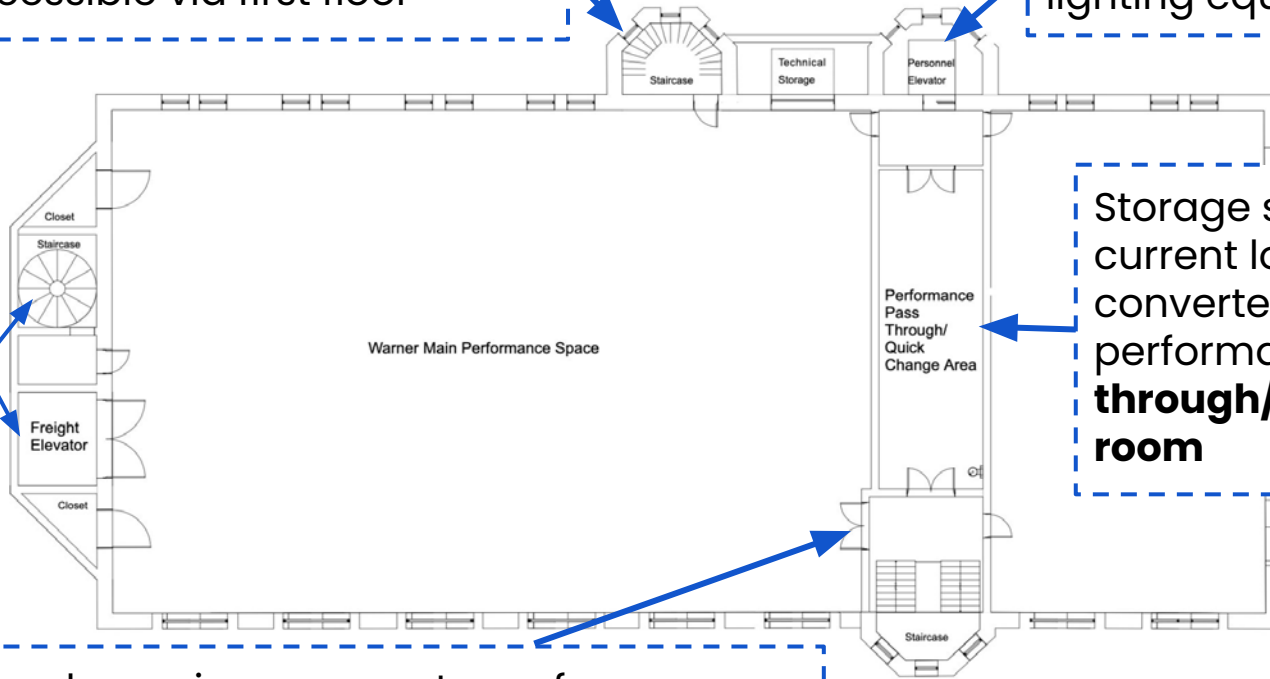
Second, west staircase now safer & more accessible via first floor

Elevator for people and lighting equipment

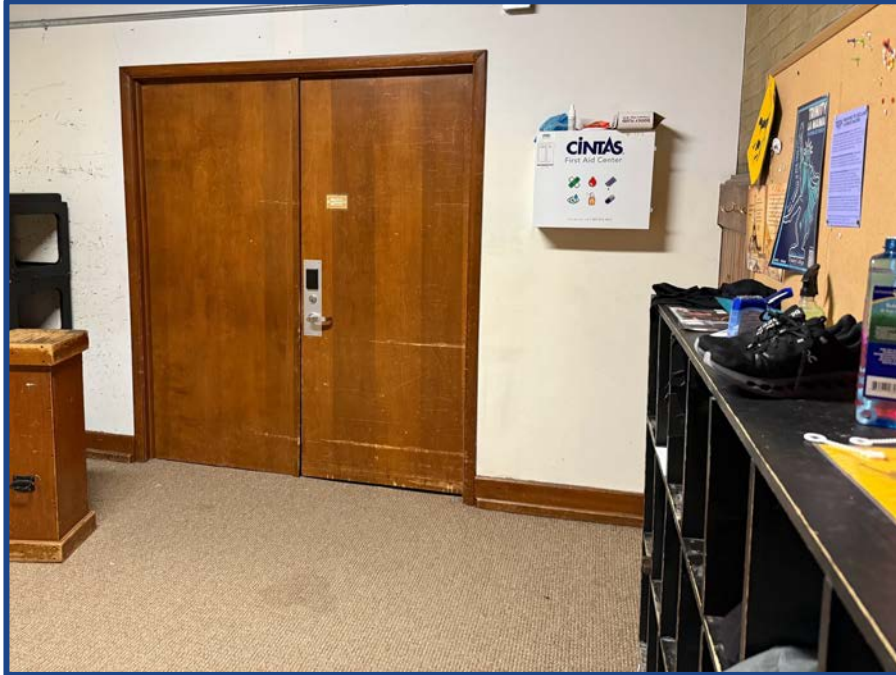
Freight elevator and **interior fire escape** added

Storage space & current lobby converted to performance **pass through/dressing room**

New entrance here gives access to performance space directly from the stairwell landing



Warner Main Backstage Space



Current lobby/cubby room



Current technical storage and lighting shop space

Warner Main Seating Problems

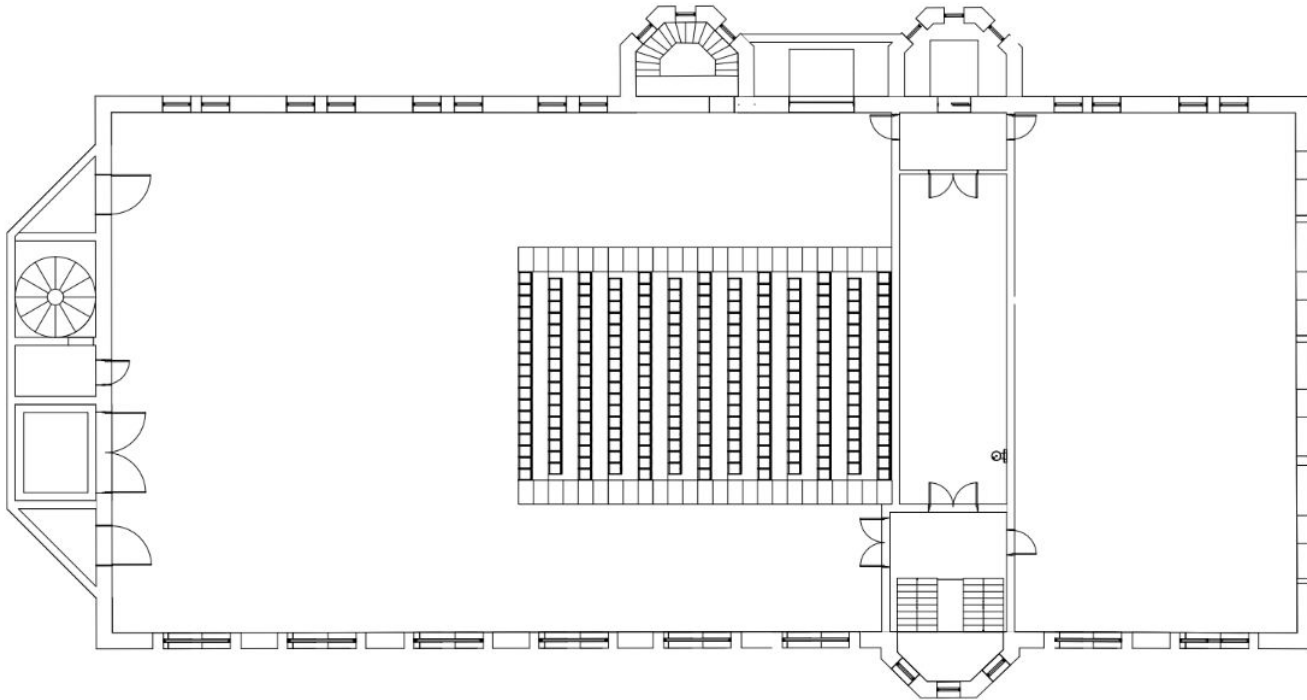
Current Warner Main seating uses portable, collapsible stage risers.



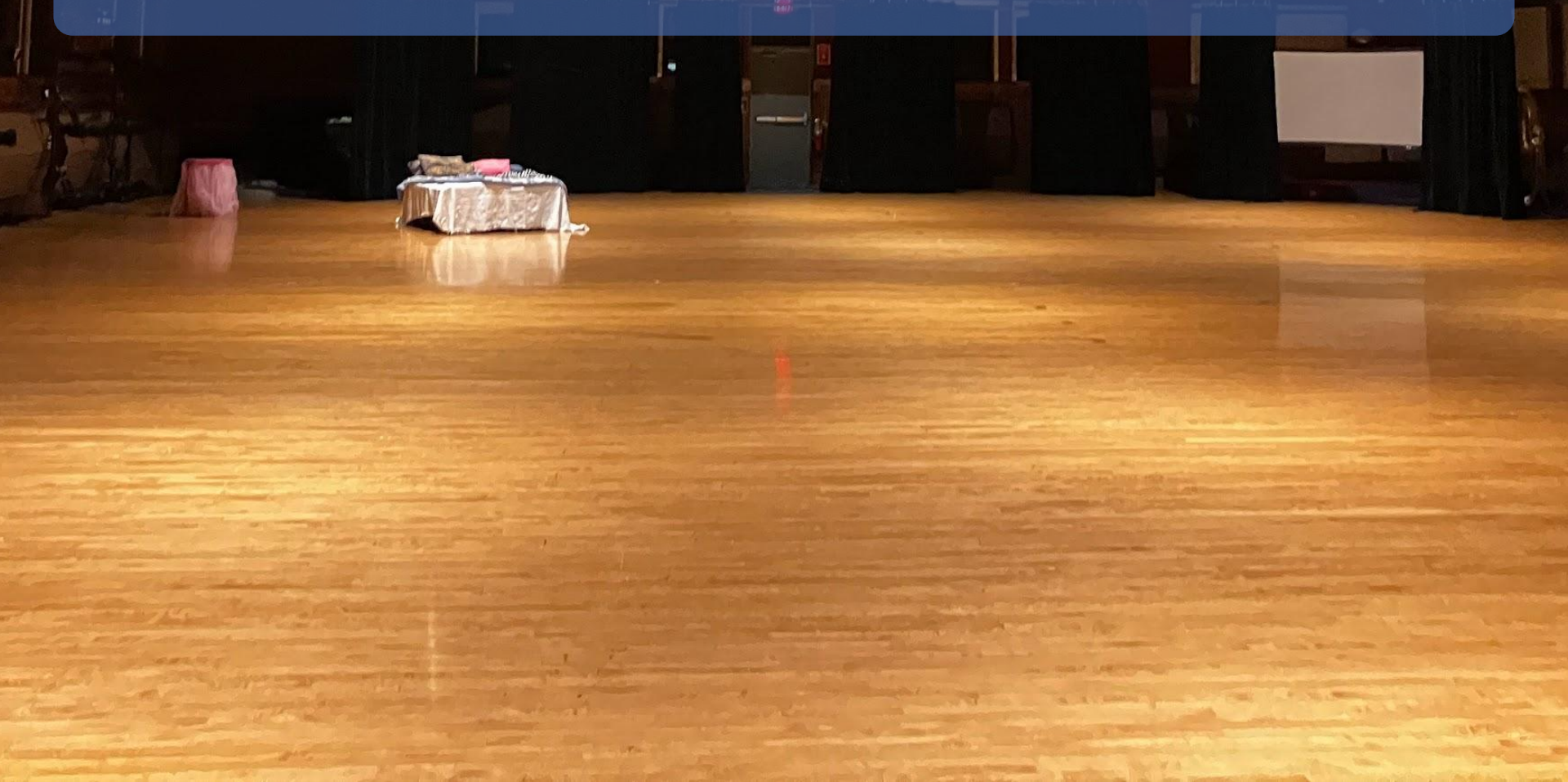
Time consuming, difficult, and labor intensive.

Warner Main Seating Solution

Retractable seating section on the north side of the space.



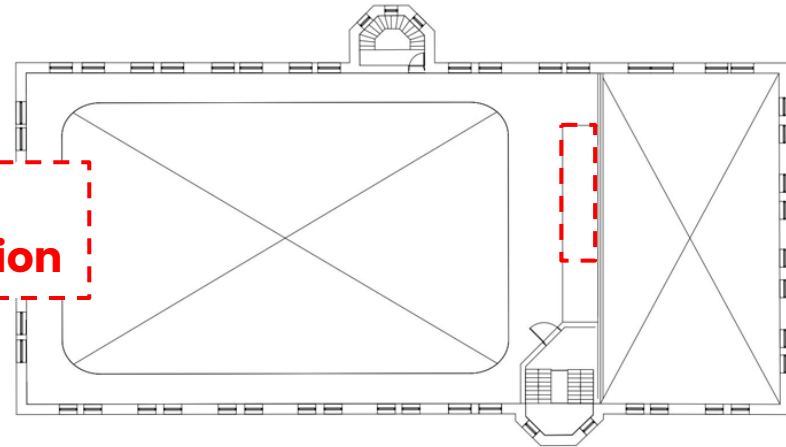
Warner Main Floor



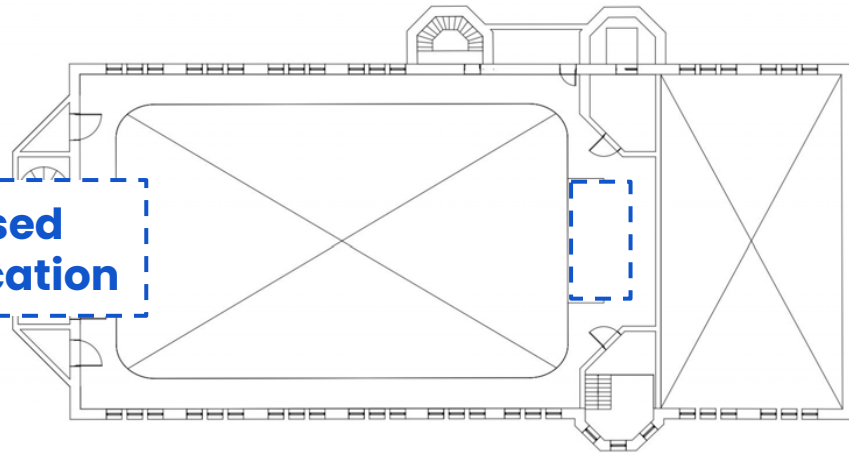
Warner Main Booth Location



**Current
booth location**



**Proposed
booth location**



**Current booth and view from
Stage Manager calling station**

Warner Main Sound System



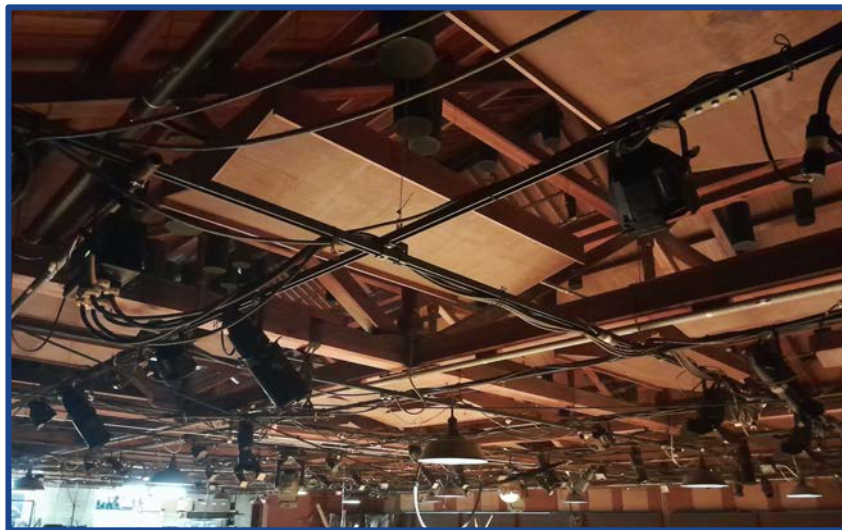
Current sound system along historic running track

Warner Main Acoustic Panels



Existing acoustic panels

Warner Main Lighting System

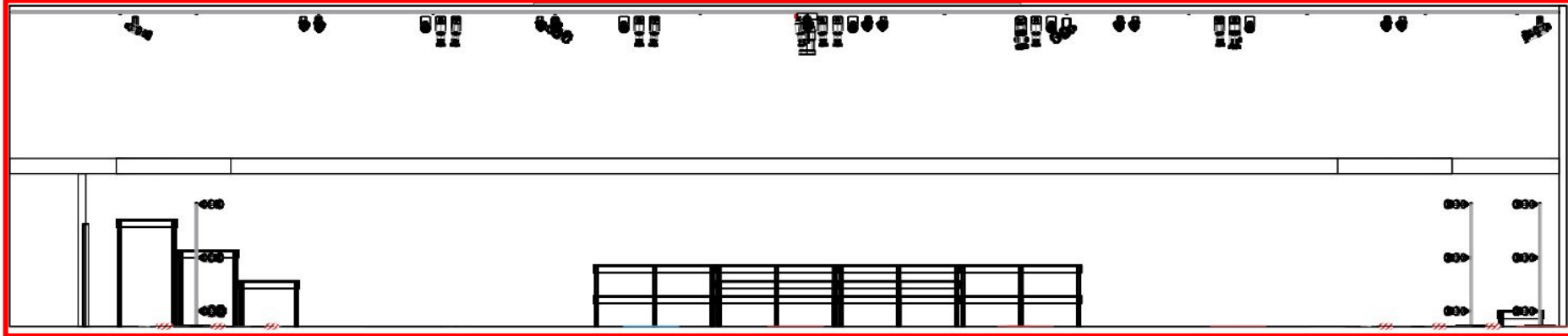


- **Unistrut**, presents difficulties with fixture hang and focus
- **Mix of installed and portable dimmers**

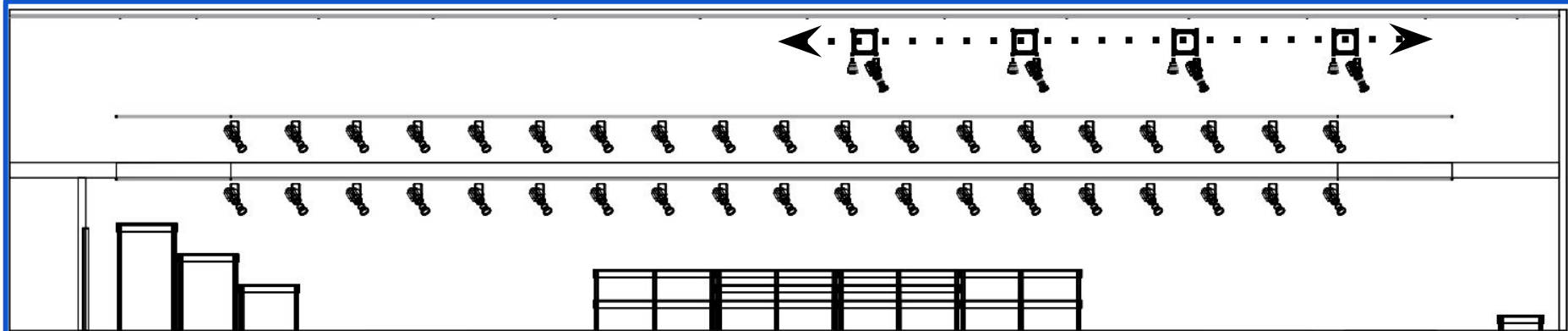
- **Inadequate storage options** (along the corners of the running track)

Warner Main Lighting System and Safety

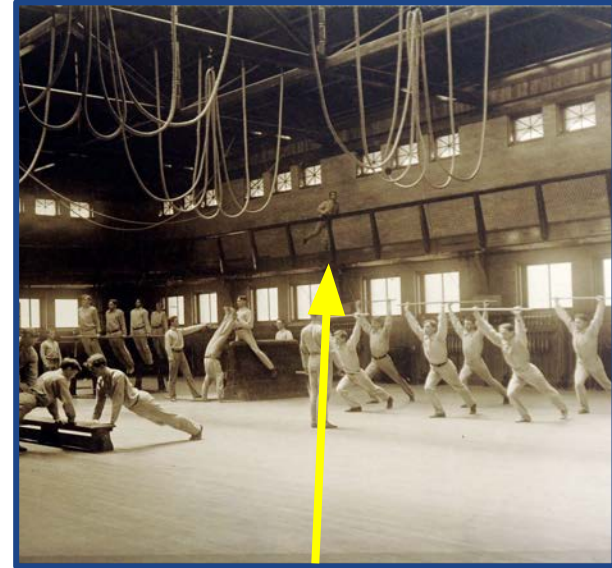
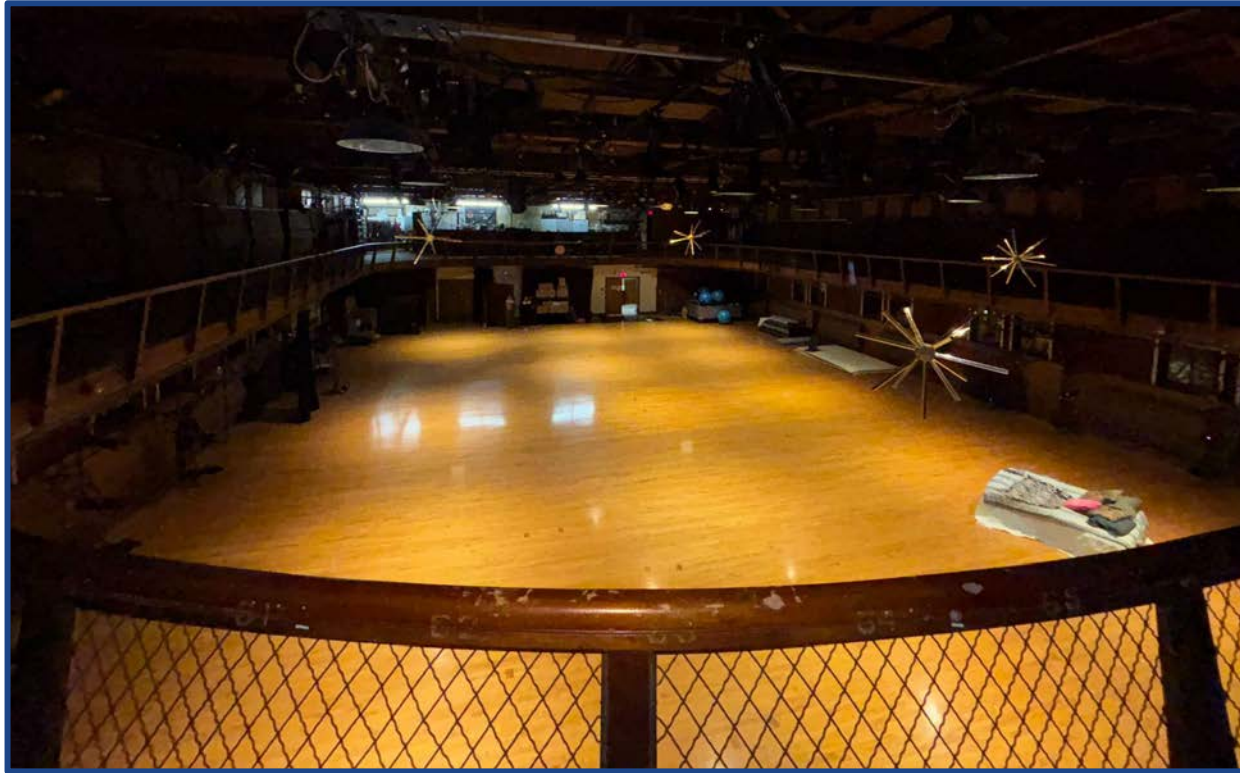
Current Section View



Updated Section View



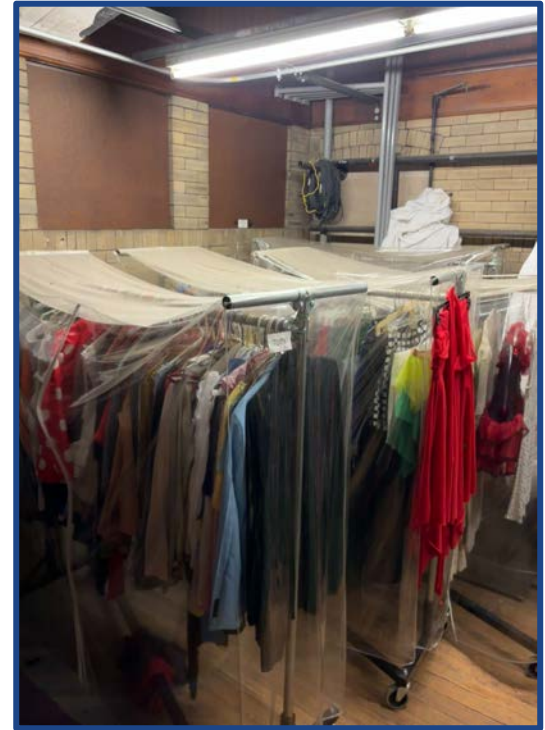
Warner Main Upper Level/Running Track



Running track in use

View of Warner Main from historic running track

Warner Main Storage

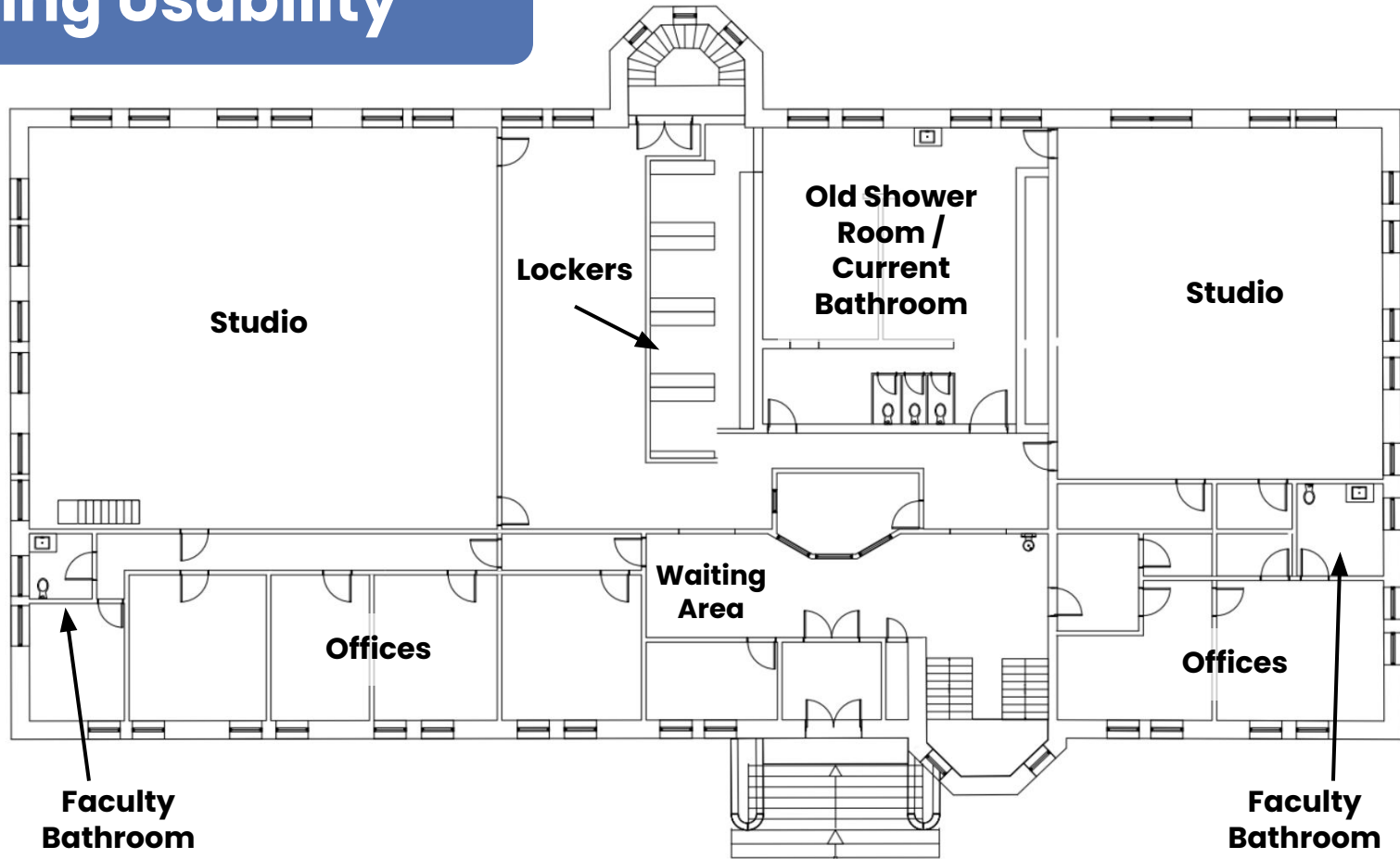


Current lighting and costume storage along corners of unlevel track

Building Usability

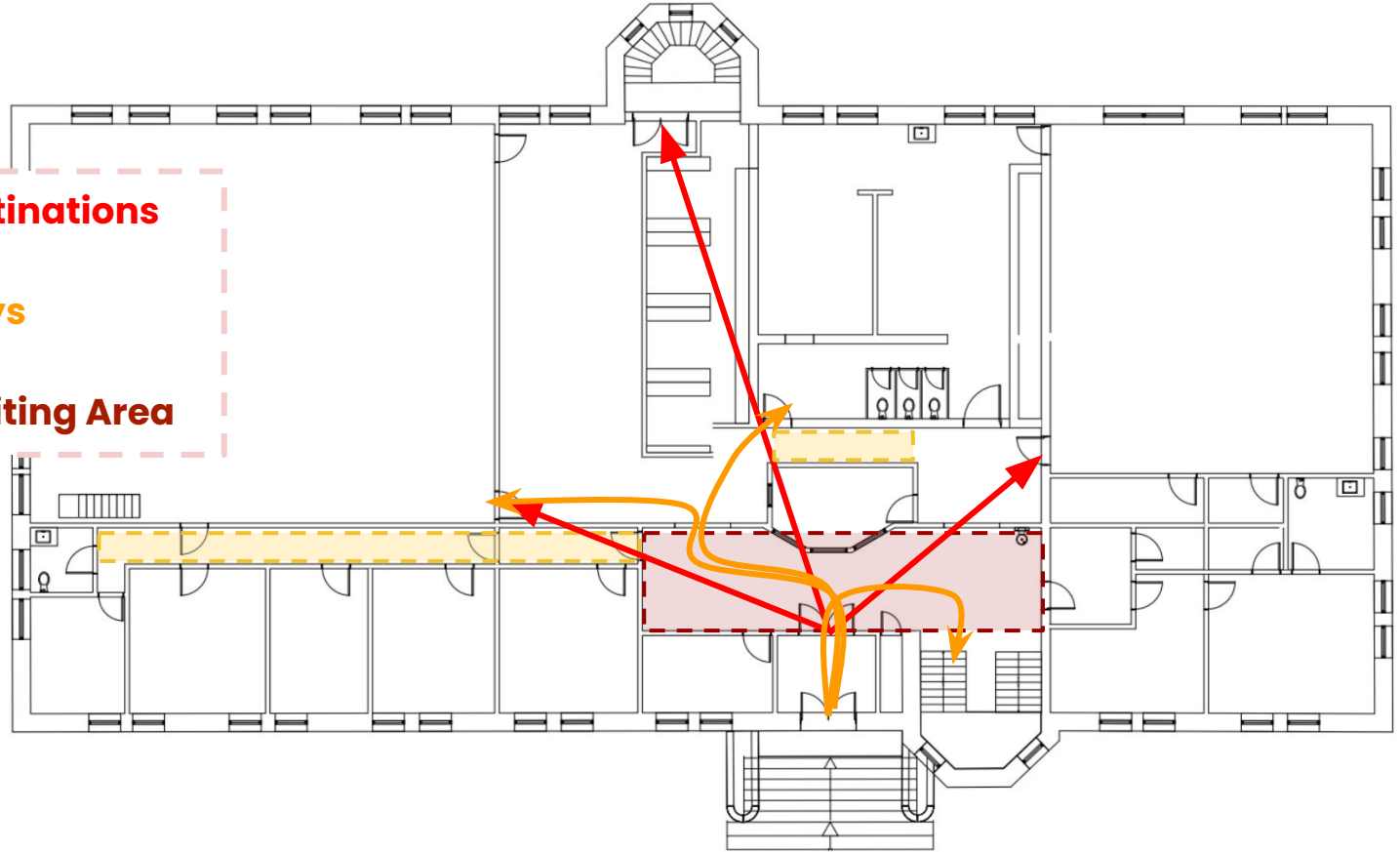
First Floor

- Traffic Flow
- Studio Space
- Student Space
- Office Space
- Bathrooms
- Wasted Space



Traffic Flow Issues

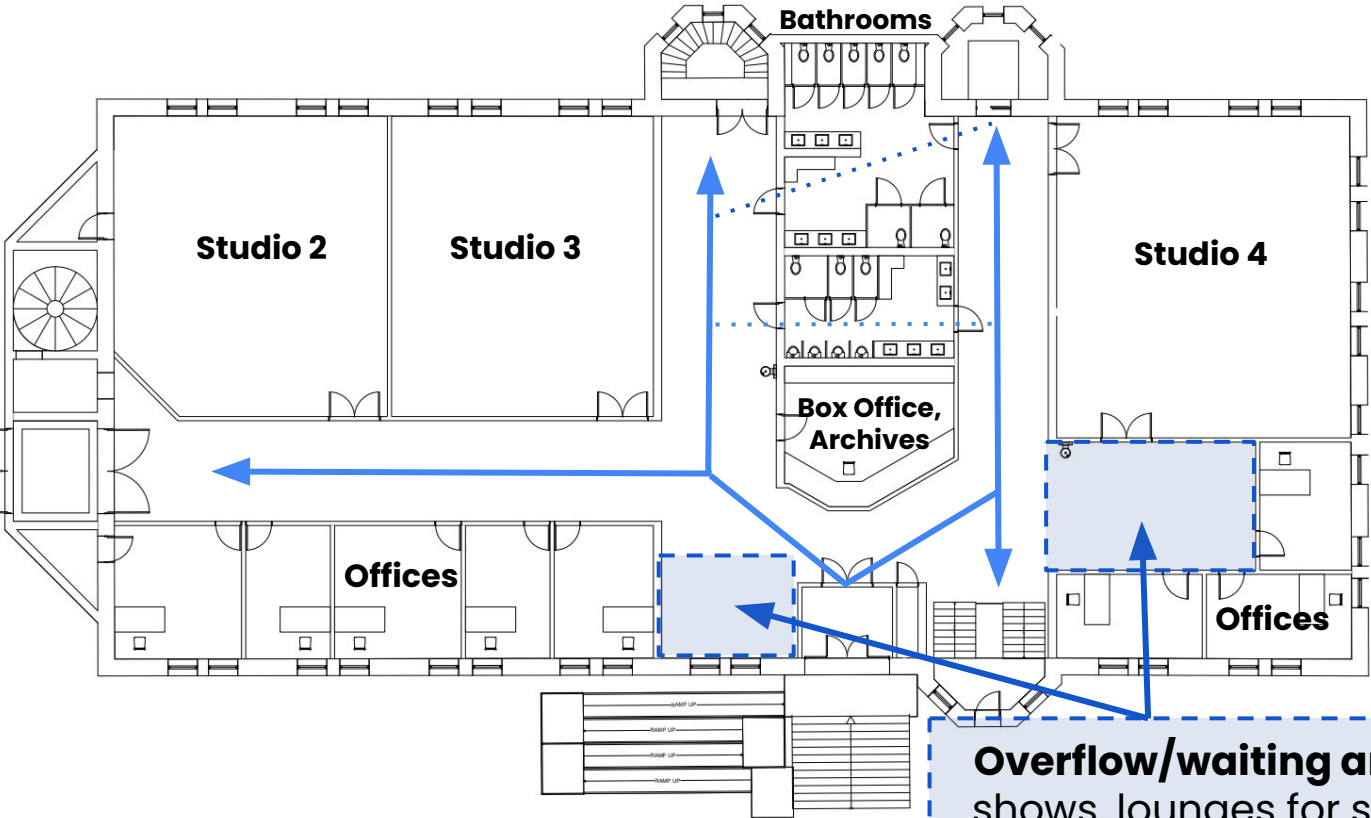
- Sightlines to destinations are obstructed
- Unclear pathways
- Narrow hallways
- Small Lobby/Waiting Area



Traffic Flow Solutions

Intuitive wide pathways to studios, offices, and stairwells

Multiple access points to Warner Main



Overflow/waiting areas for shows, lounges for students

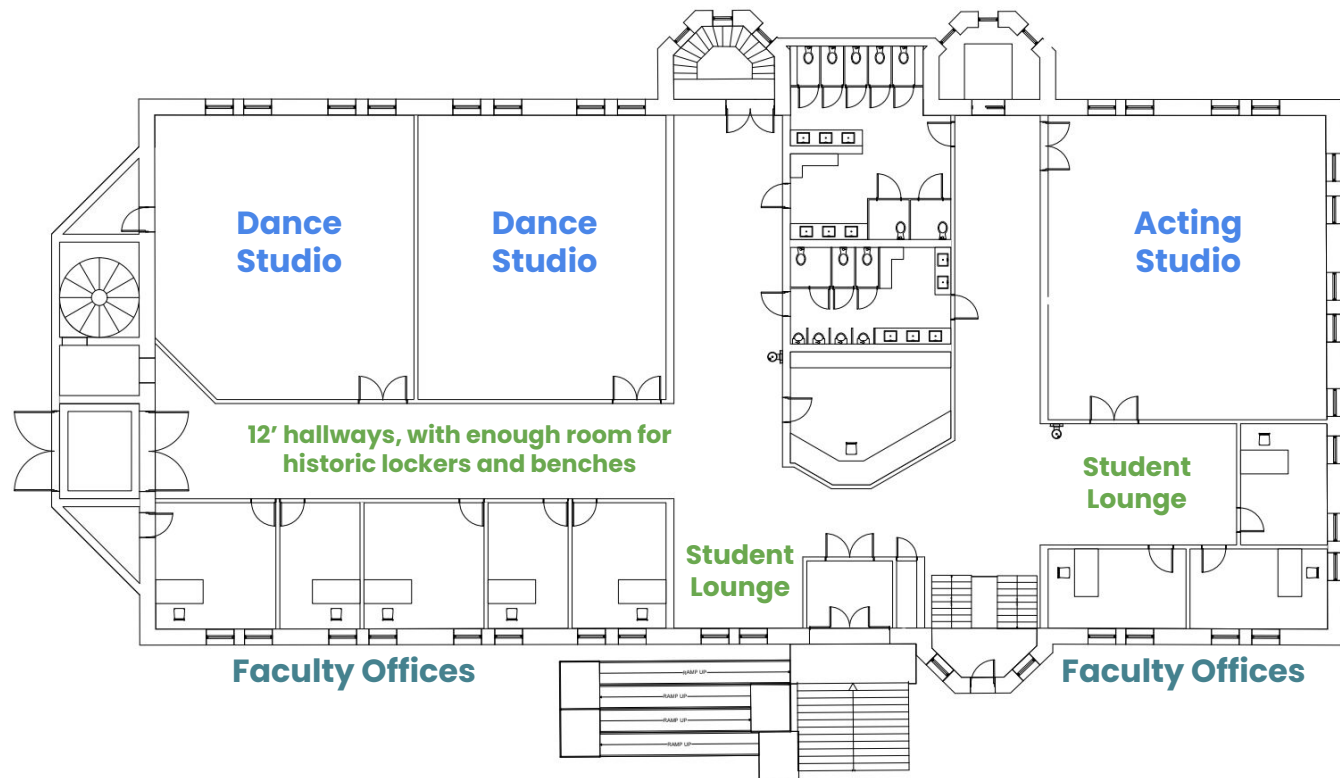
Studio, Student, and Office Spaces

Increased studio space, office quantity, and communal areas.

3 large studios on the west side of the building

2 communal spaces serve as student lounge and waiting areas for meetings with faculty

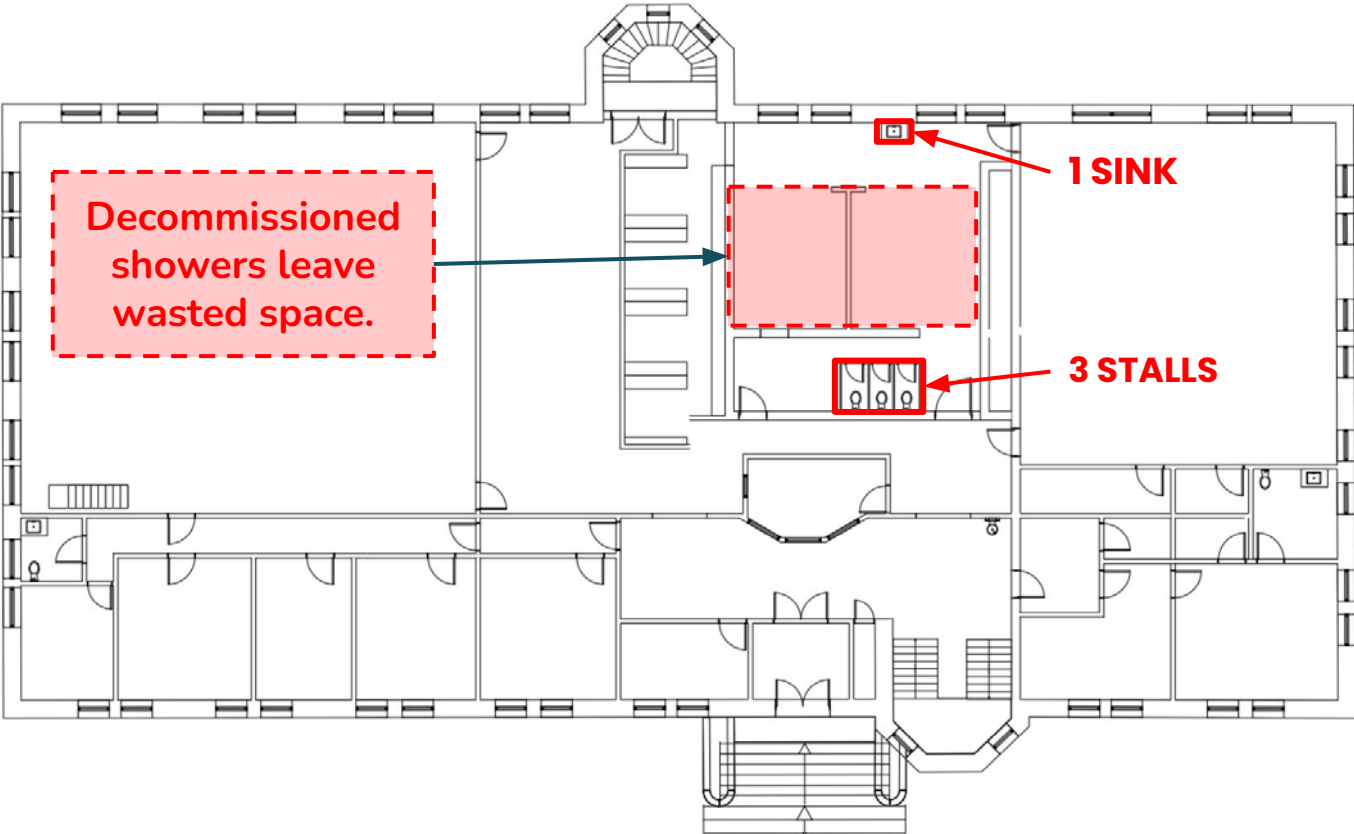
9 offices for Dance and Theater Faculty (10 offices total including new 3rd-floor tech office)



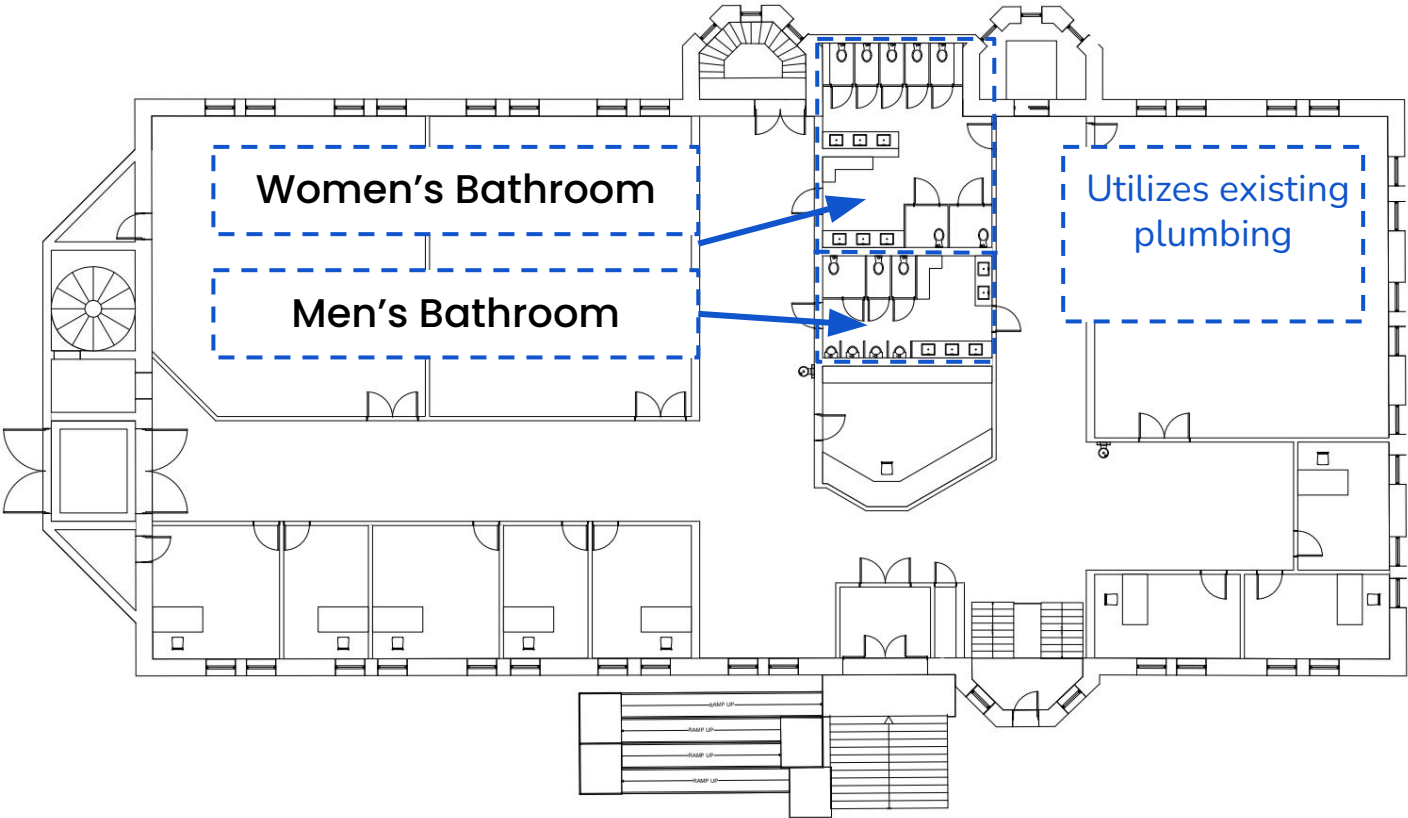
New Lounge and Studio Renderings



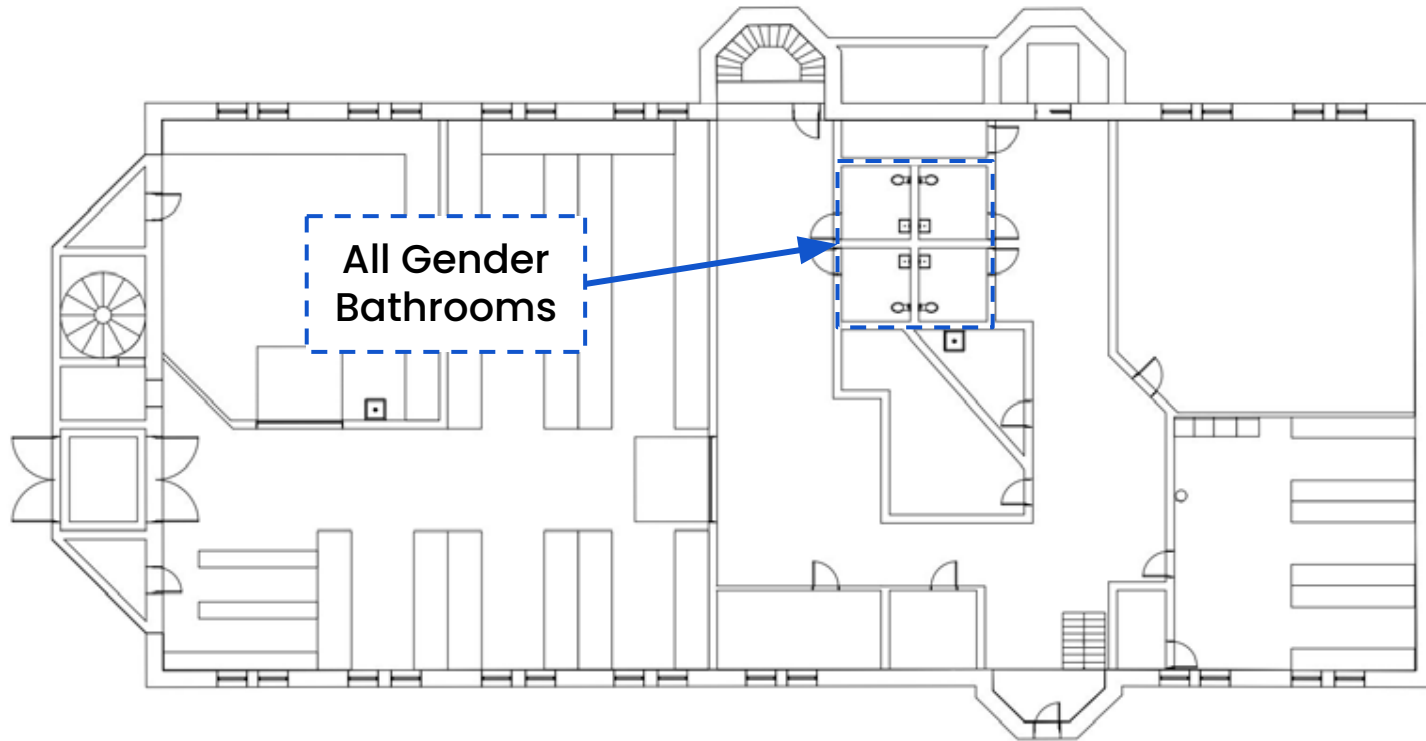
Current Bathrooms



Proposed Bathrooms, First Floor



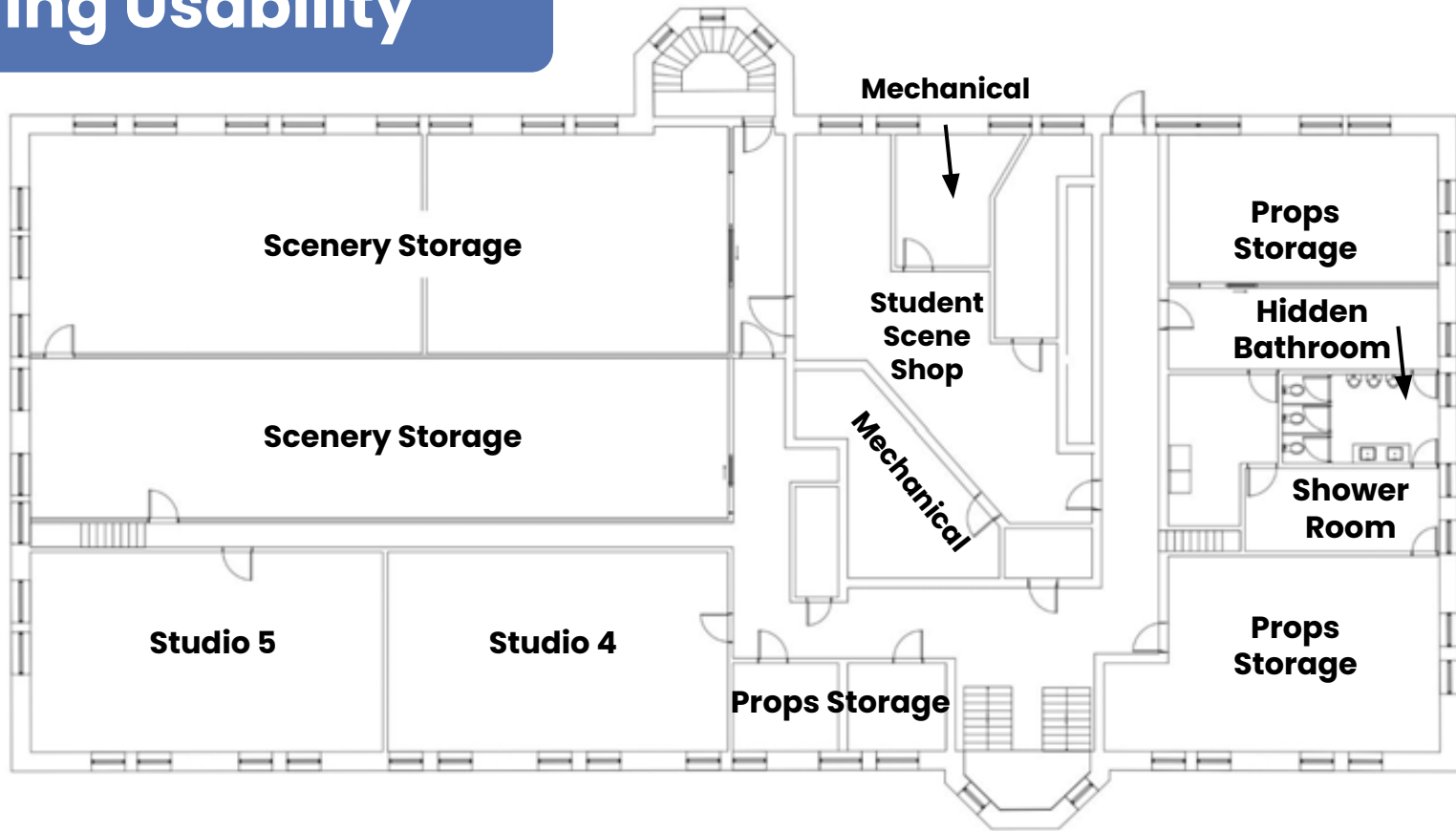
Proposed Bathrooms, Basement



Building Usability

Basement

- Studios
- Bathrooms
- Access
- Storage
- Scene Shop



Basement Pictures

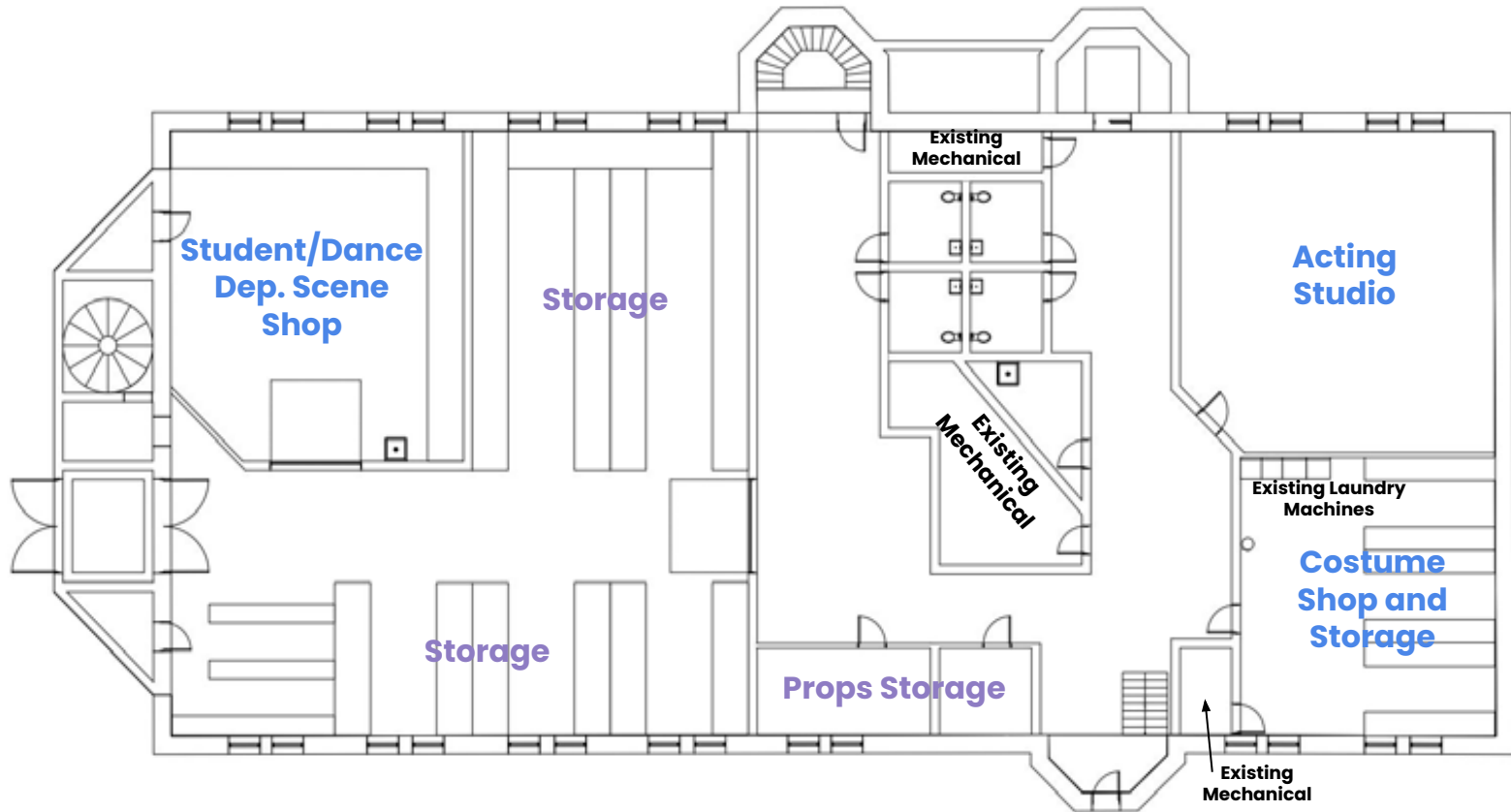


Student Scene Shop



Studio 5 - Ballet Studio

Other Basement Improvements

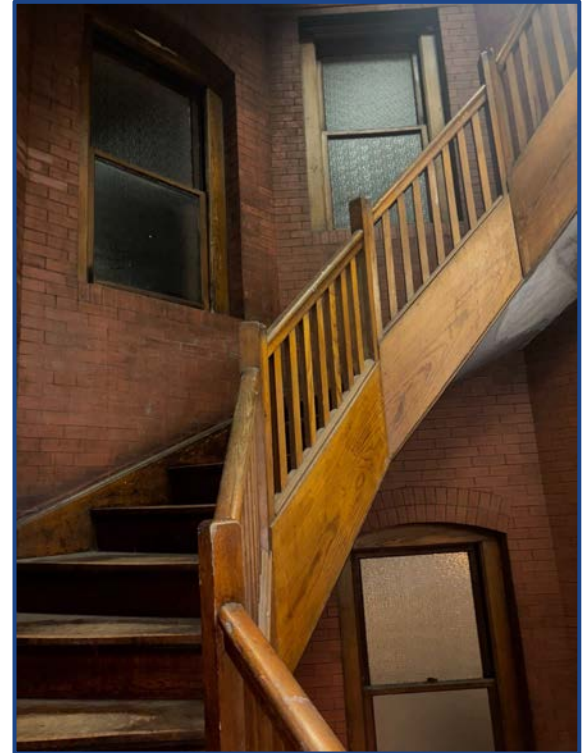


Aesthetic Continuity



First Floor Studio

Large Windows and Hardwood Floors



Wood Details on Stairs

Aesthetic Continuity



**Stained glass detail
on Box Office**



Wooden Molding and Trim

Aesthetic Continuity



Original Gymnasium Lockers



Wooden Display Cases

Aesthetic Continuity



Sandstone Exterior and Octagonal Stair Towers

Conclusion

Accessibility

Sustainability

Performance Space

Building Usability

Aesthetic Continuity





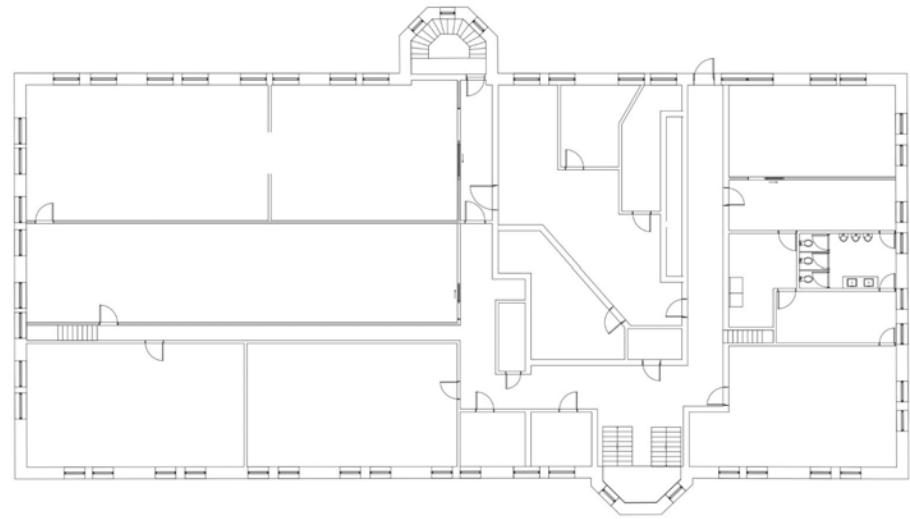
OBERLIN COLLEGE
Theater

*Historical photos courtesy of Dan James
and the Oberlin College Archives.*

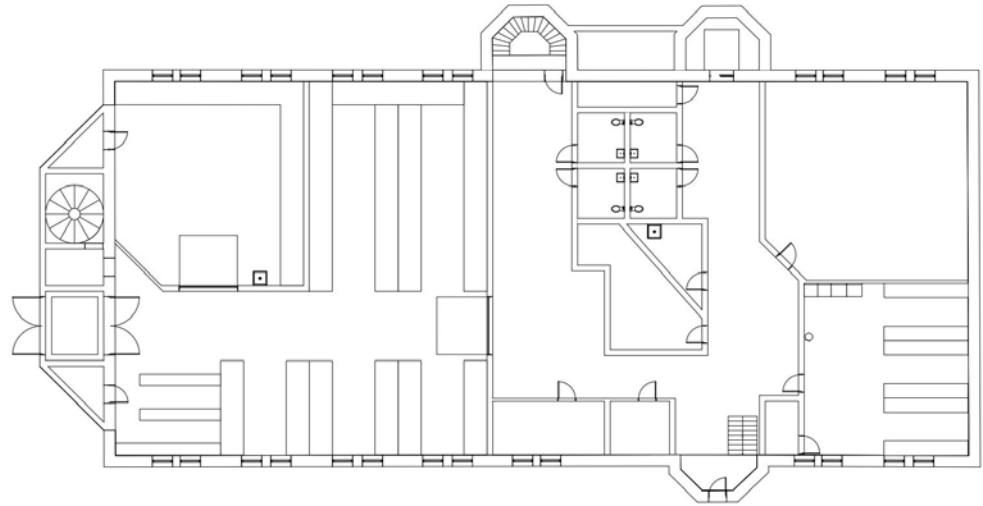
Square Footage Breakdown

| Space | Current sqft | Proposed sqft | Percentage Change |
|---------------------------------|-------------------------------------|--------------------------------------|----------------------------------|
| Dance-Specific Studios | 3046 ft ² | 4531 ft ² | +48.8% |
| Non-Dance-Specific Studios | 4154 ft ² | 2525 ft ² | -39.2%* |
| Student Scene Shop | 533 ft ² | 1122 ft ² | +110.5% |
| Office Space | 1638 ft ² (8 offices) | 1808 ft ² (10 offices) | +10.4% (+25% office quantity) |
| Lounge Space | 183 ft ² | 698 ft ² | +281.4% |
| Scenic and Props Storage | 4420 ft ² | 3251 ft ² | -26.4%* |
| Designated Costume Shop/Storage | 223 ft ² | 852 ft ² | +282.1% |
| Designated Tech Storage | 195 ft ² | 1117 ft ² | +211.5% |
| Designated Dressing Room | 0 ft ² | 548 ft ² | + n/a% |

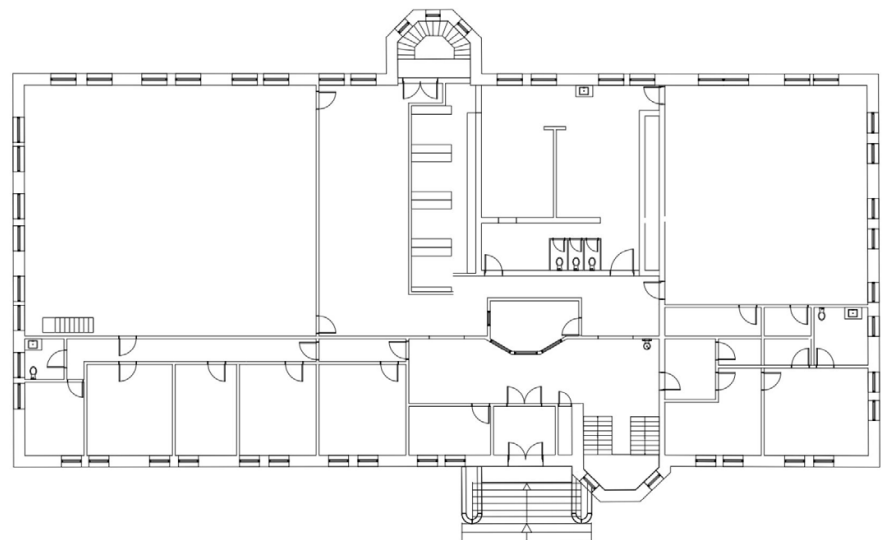
Current Basement



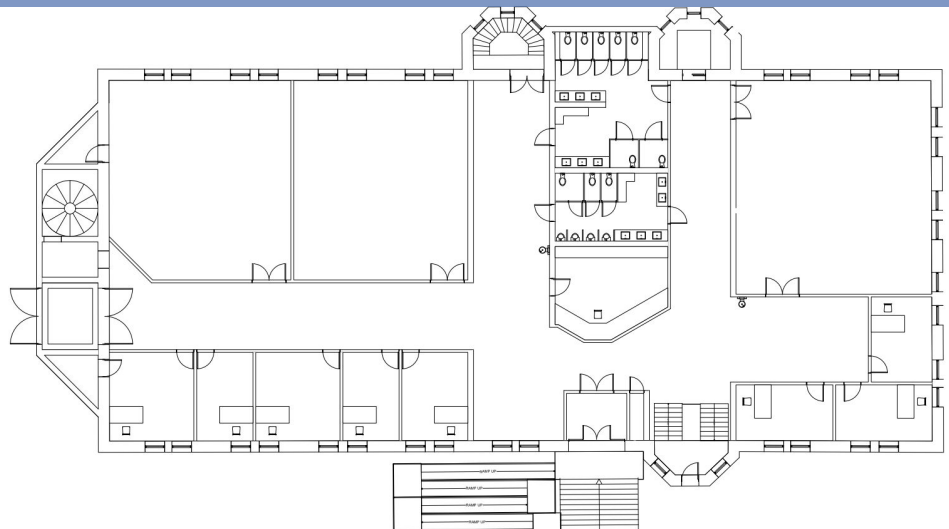
Proposed Basement



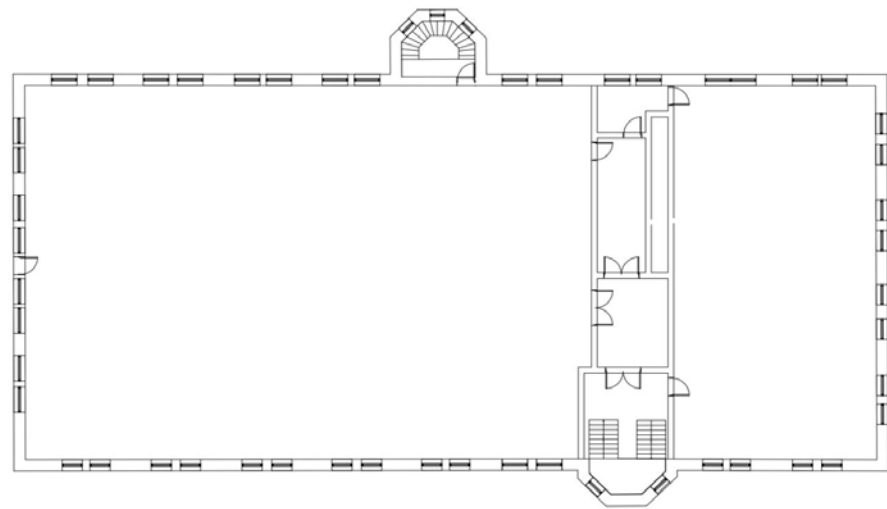
Current First Floor



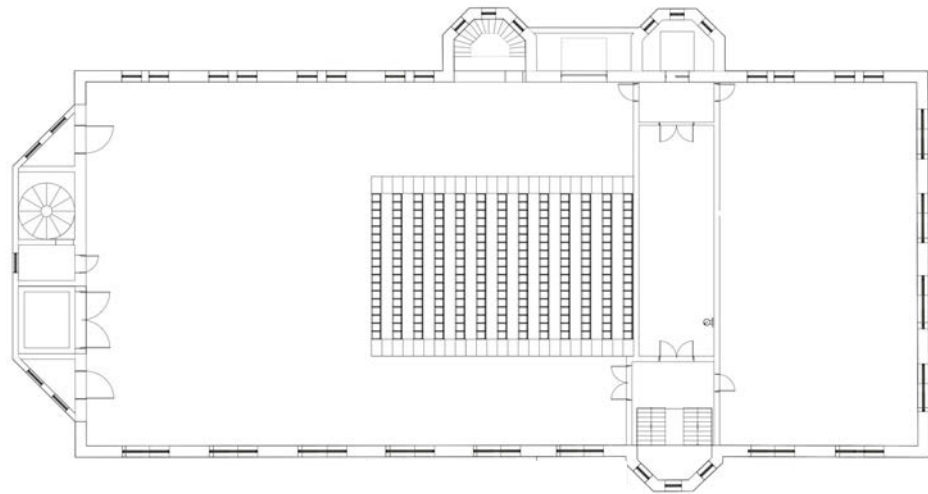
Proposed First Floor



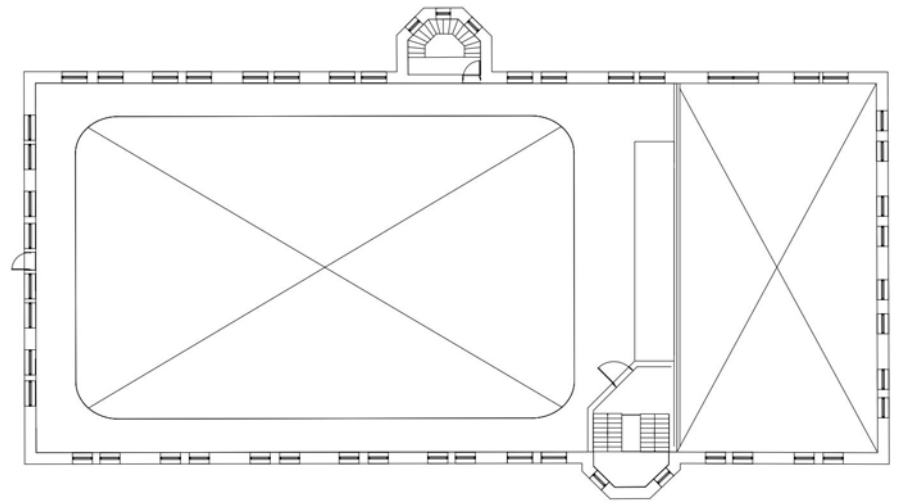
Current 2nd Floor



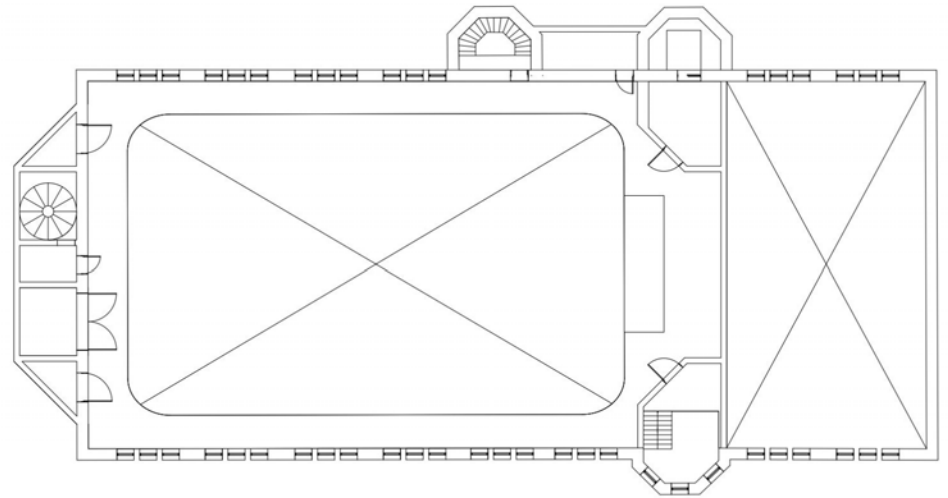
Proposed 2nd Floor



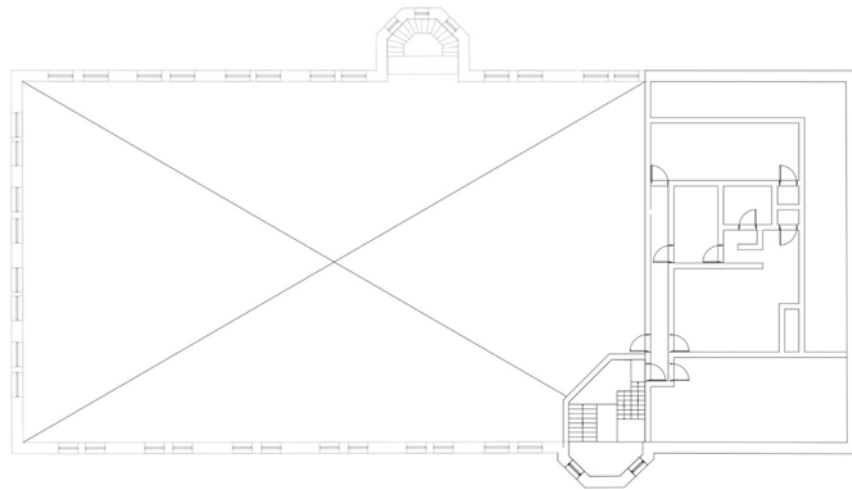
Current Running Track Level



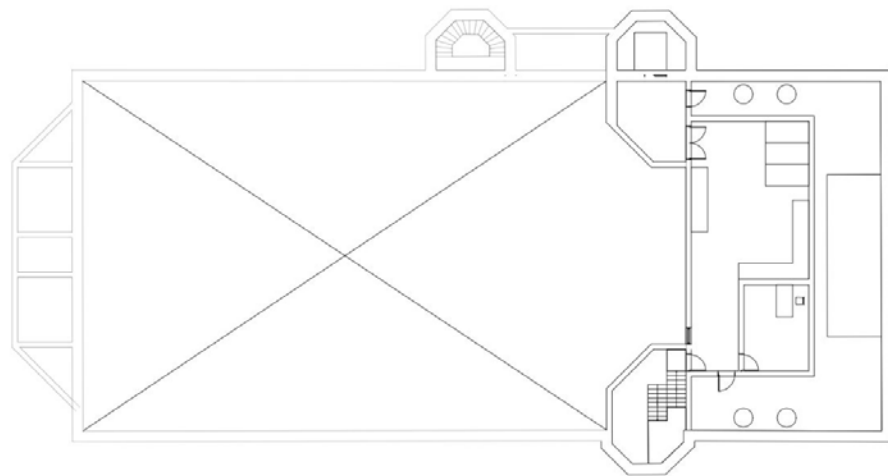
Proposed Running Track Level



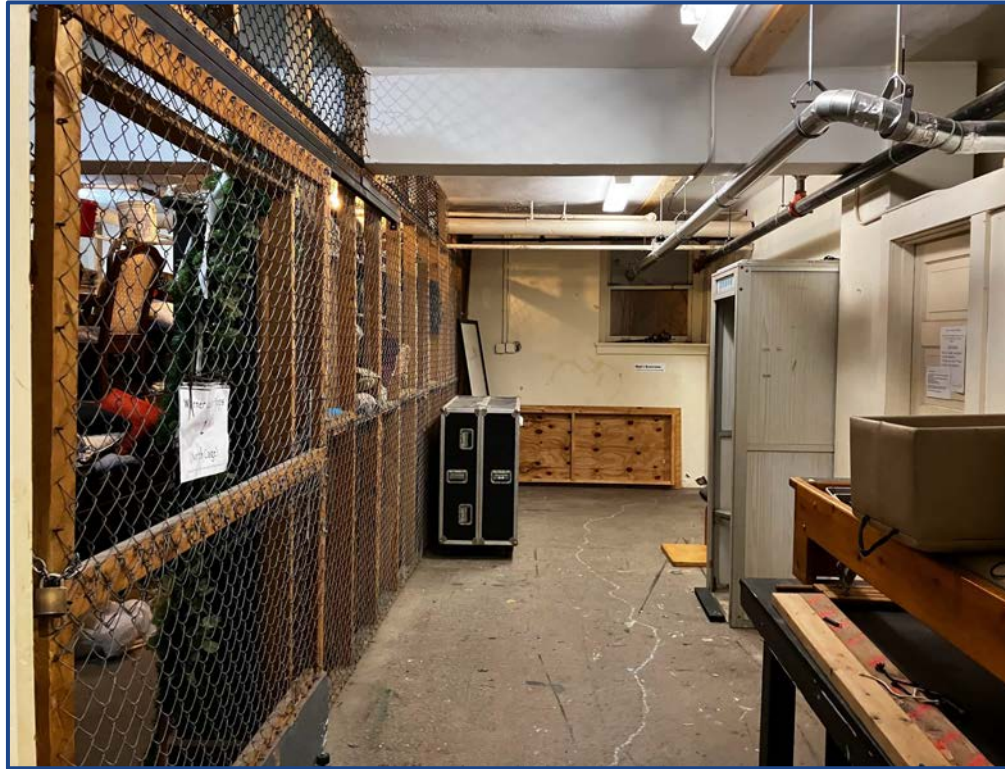
Current 3rd Floor



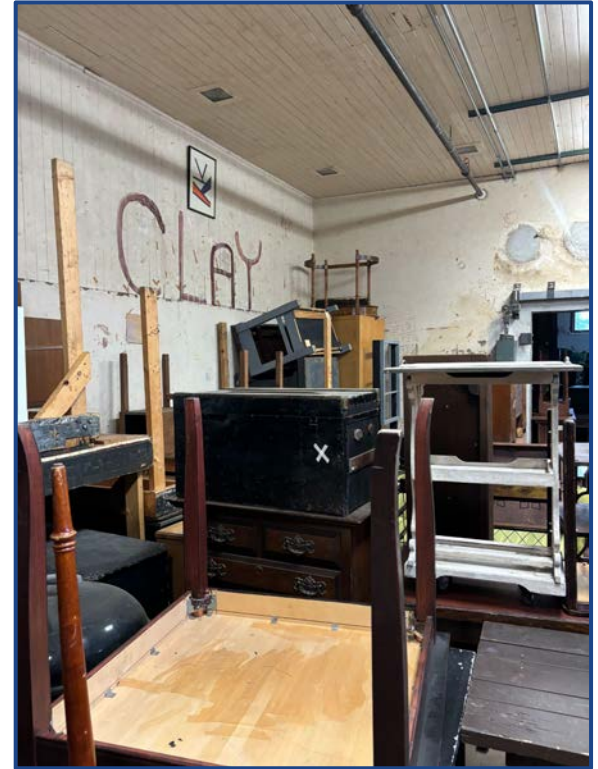
Proposed 3rd Floor



Basement Interior

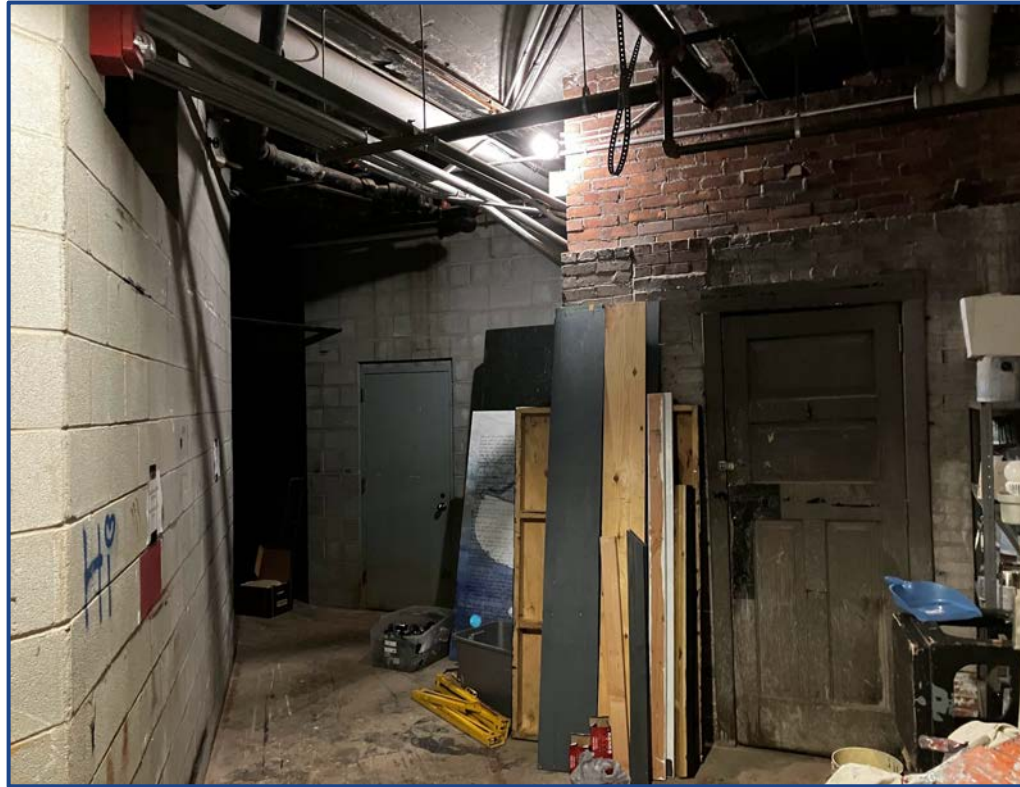


Storage Cage



Storage Pile

Basement Interior



Current Student Scene Shop



Historic Urinals

Current Bathroom in Historic Shower Space



First Floor Interior



Current Lounge/Waiting Area



Hallway to Faculty Offices

First Floor Interior

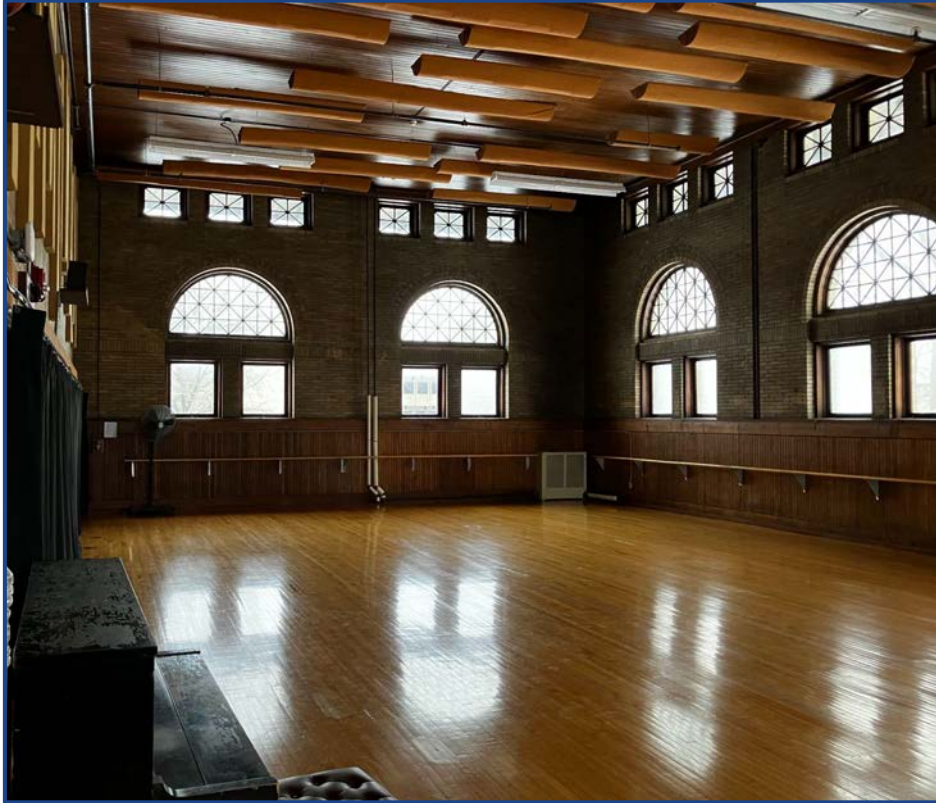


Current Studio 2



Current Studio 3

Second Floor Interior



Current Studio 1



Class in Warner Main

Third Floor Interior



Empty Space



Storage

More Exterior Photos



Warner Center West Side



Warner Center South Side