

# OU WEITZENHOFFER AND SUPPORT SPACES RENOVATION

## University of Oklahoma

**Team Members:** Goldie Snow, Senior Scenic Design; Noah Jittawait, Junior Lighting Design; Elizabeth Elliott, Junior Scenic Design; Ruby Ravsten, Sophomore Lightning and Scenic Design; Lucas Knapp, Sophomore Lighting Design; Vesa Qerimi, Sophomore Architecture

**ASTC Advisor:** Kimberly Corbett Oates

**University Advisor:** Jon Young



# TEAM MEMBERS



GOLDIE SNOW  
SCENIC DESIGN, SENIOR



ELIZABETH ELLIOTT  
SCENIC DESIGN, JUNIOR



NOAH JITTAWAIT  
LIGHTING DESIGN, JUNIOR



RUBY RAVSTEN  
LIGHTING & SCENIC DESIGN, SOPHOMORE



LUCAS KNAPP  
LIGHTING DESIGN, SOPHOMORE



VESA QERIMI  
ARCHITECTURE, SOPHOMORE



# CONCEPT STATEMENT

The Weitzenhoffer Family College of Fine Arts (WFCFA) established in 1924 has just celebrated its centennial year. The performing arts at the University of Oklahoma offer around 1,100 students and 200 faculty/staff a home each year. This includes Drama, Dance, Musical Theatre, Opera, and other student-curated pieces that blend these mediums of art. Built in 1965, as one of the six buildings that support the schools of the WFCFA, The University of Oklahoma's Rupel J. Jones Fine Arts Center (FAC) has fostered the growth of the 2nd oldest drama school in the country as well as the School of Dance, School of Music, and School of Musical Theatre. The FAC has constantly evolved alongside the changes in the educational needs of the student body. However, at this point, the WFCFA has outgrown those needs.

Renovation of the Weitzenhoffer Theatre and other critical spaces in the FAC would allow for supportive and creative expansion in the form of facilitating artist well-being and access. Our project will focus on renovating the Weitzenhoffer Theatre and support spaces in the FAC, while also proposing a new building that will house classrooms, rehearsal, and support spaces for future growth of the College of Fine Arts. Renovating and expanding the spaces will allow for a more accessible education that directly correlates to the needs of the WFCFA. By enhancing the production capabilities of the support spaces, we will provide a safe uplifting environment for the creation of art that explores the collaboration and coexistence of all mediums of art. We aspire to create a space that is inviting, accessible, safe, and inspiring for everyone. One that connects creative minds from all of campus and invites creativity, risk, supports, and inspires the next generation of collaborative artists.



# RESEARCH



# COLLEGE OF FINE ARTS NEEDS

- We surveyed the college to see what individual programs could use currently as well as anticipating growth within the schools, to have these spaces best support the education and community of today and tomorrow.
- School of Dance
  - More dance studios
  - Warm up lobbies for before performances and classes
  - Spring floors for dancers
- School of Musical Theatre
  - The flexibility of the theatre/ production capabilities
  - Rehearsal halls that reflect the production spaces to full scale
- School of Drama
  - The flexibility of the theatre/ production capabilities
  - Production studios expansion and resources
  - Accessibility to the building
  - Noise from studios/other classrooms not allowing for full focus



# CURRENT BUILDING

Weitzenhoffer Theatre and Support Spaces



# CURRENT BUILDING

- Various programs within the College of Fine Arts have utilized this space, from Musicals, Dramas, Operas, or even dance rehearsals
- This theatre while used primarily for performances, is also used as an extension of the scenic studio for builds
- This space can often become a space of storage as well





# WEITZENHOFFER THEATRE- EXISTING CONDITIONS





# WEITZENHOFFER THEATRE

- This is the Blackbox theatre and most flexible space within the college, however the true flexibility of space is less than ideal, with how difficult it is rearranging the seating banks
- The space itself is not the most accessible, with the only entrance to the grid being through a ladder from the booth
- There is no infrastructure to support rigging, for designer and equipment
- The backstage storage/workspace is not enough for the productions we produce
- There is a lack of support for sound, both bands and orchestra and sound systems in general
- The lobby doesn't invite audience members in or showcase the program in the best way possible
- The lack of power for electrics limits designers and production capabilities



# FINE ARTS CENTER- EXISTING CONDITIONS

- Accessibility has been a pressing issue within the theatre, as well as its surrounding support spaces
- With the level of productions we work on, the shops (Electrics, Scenic, and Costumes) need more space to successfully produce the productions the programs need
- There is not enough classrooms and dance studios to support the growth of the programs, so scheduling becomes



# PROPOSED RENOVATIONS

Weitzenhoffer Theatre and support spaces



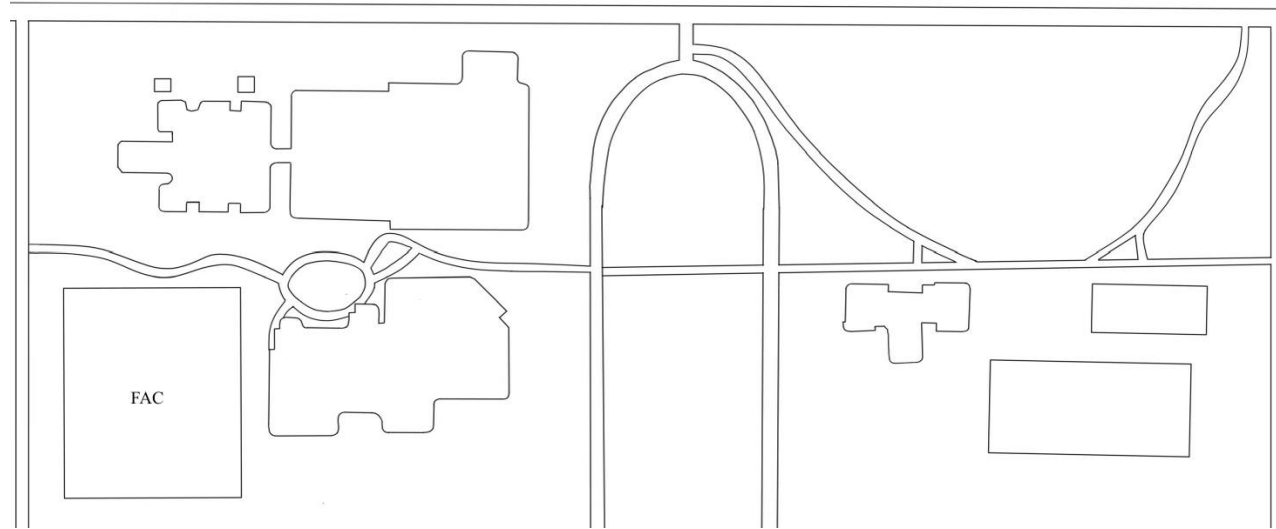
# RENOVATIONS- WEITZENHOFFER THEATRE

- New walls that can be weight bearing
- Lift system with basement seating bank storage
- Winch in backstage area
- Easier grid access accessibility
- Center the garage door
- Make the Large seating bank movable
- Bar/Lobby expansion
- Add stairs up to booth
- Expand booth
- Revolve capabilities by garage wall
- Easier booth access
- Windows in Lobby
- Expand lobby to preserve aesthetic of front
- Workshop access from new run room
- Permanent masking options for doors
- Pit/band/orchestra sound room
- Reinforced rigging points on the grid, especially extending to the wall.
- Permanent pulley/winch system in grid for stage area below to assist rigging/lighting.
- Level floor in workshop to stage

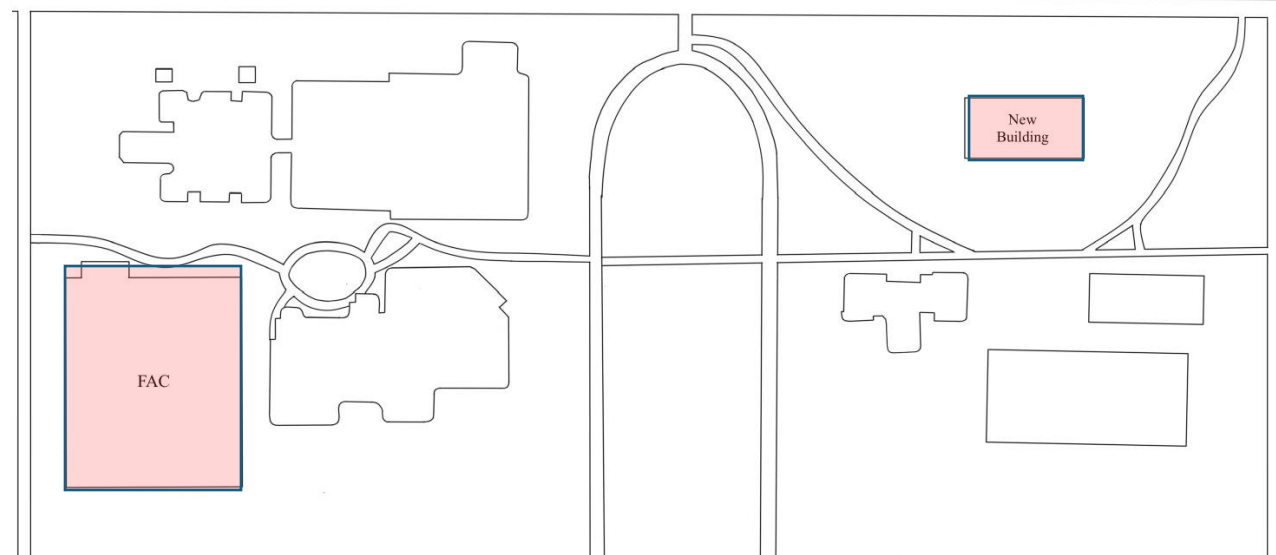


# RENOVATIONS- AERIAL VIEW

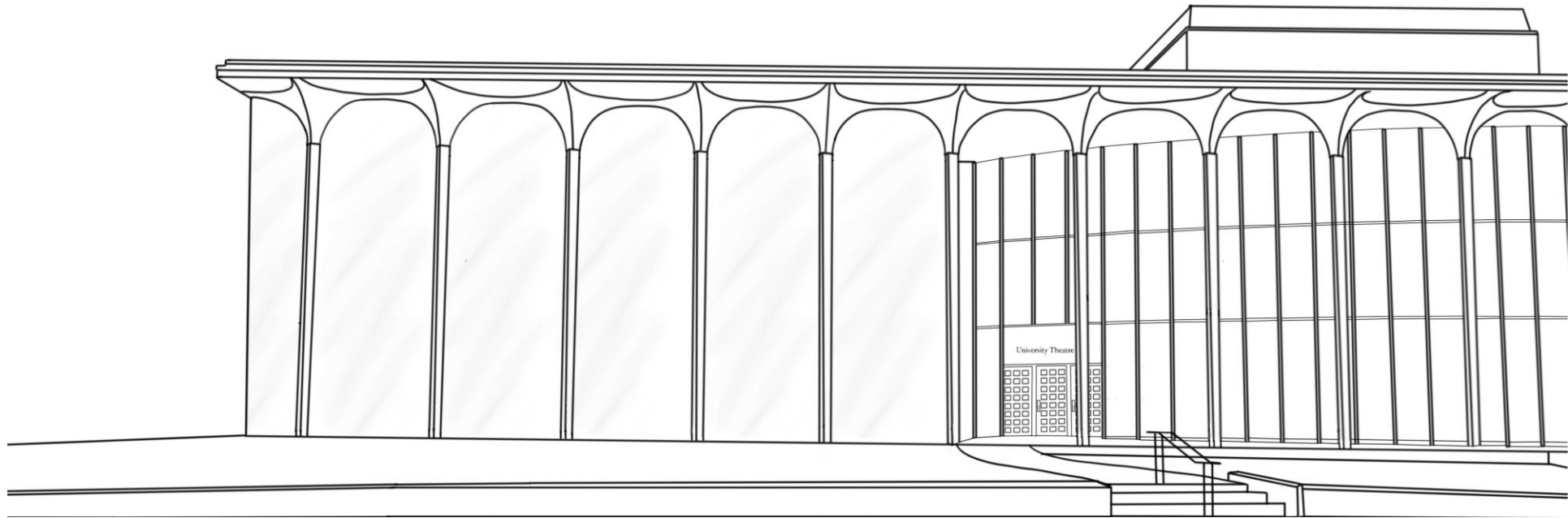
BEFORE



AFTER



# RENOVATIONS- RENOVATED FRONT VIEW



# RENOVATIONS- RENOVATED THEATRE





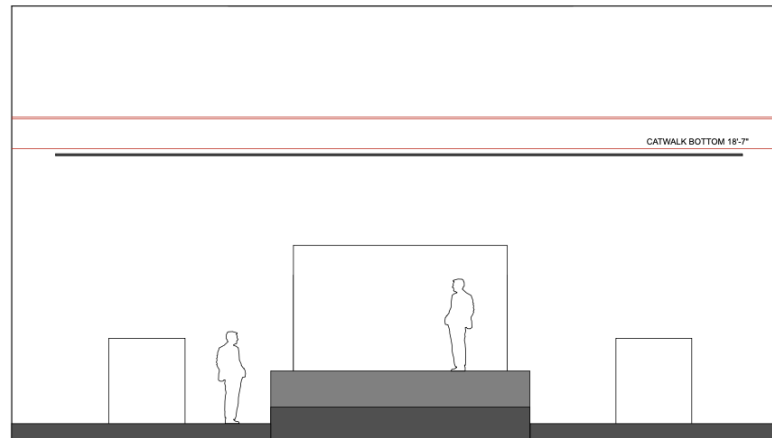
# RENOVATIONS-

## NOTES:

1. DOORS TO BACKSTAGE SPACES WERE MODIFIED TO MATCH ONE ANOTHER.
2. CENTER GARAGE DOOR WAS CENTERED IN THE SPACE AND THE ROLLING COMPONENT REMOVED IN FAVOR OF A SLIDING BLACK MATTE METAL DOOR WITHIN THE BACKSTAGE SPACE TO ACCOMMODATE NEW LIFT SYSTEM.
3. LIFTS IN CENTER ARE PICTURED IN A LIFTED AND LOCKED POSITION. THERE ARE 2/9 GRID LIFTS PICTURED AS RAISED IN THIS VIEW.
4. ENTIRE GRID WAS LEVELED TO BE ON THE SAME LEVEL.
5. THE BATON IMMEDIATELY BELOW THE GRID REPRESENTS A NEW MOTORIZED BATON WHICH ALLOWS FOR MORE FLEXIBILITY IN STAGING AND REMEDIES THE LACK OF PROCENIUM AND SUPPORTS RIGGING TO ALLEVIATE STRESS ON STUDENT WORKERS AND FACULTY/STAFF WORKING IN THE SPACE.

## NOTES:

6. WALLS SHOULD BE REBUILT TO INCLUDE AN AIR SPACE FOR SOUND INSULATION AND TO BE WEIGHT BEARING CAPABLE.



1 WEITZ FRONT VIEW  
Scale: 1/8" = 1'-0"

VECTORWORKS EDUCATIONAL VERSION

VECTORWORKS EDUCATIONAL VERSION

Drawn By:

**OU  
Renovation  
Challenge  
Team**



Project:

**ASTC  
Renovation  
Project**

Purpose:

**RENO FRONT VIEW**

Date:

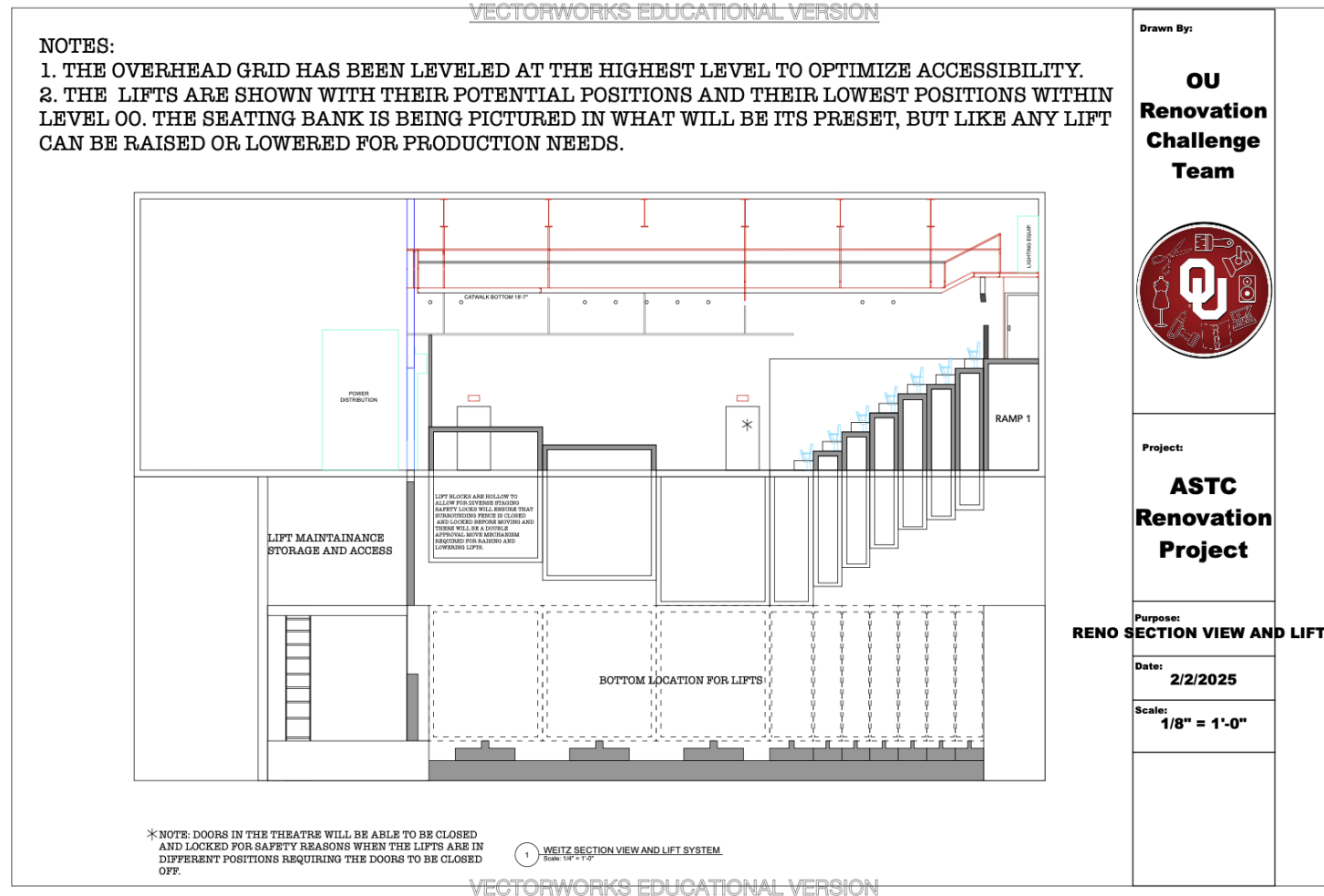
**2/2/2025**

Scale:

**1/8" = 1'-0"**



# RENOVATIONS-



# RENOVATIONS- LOBBY

VIP Lounge

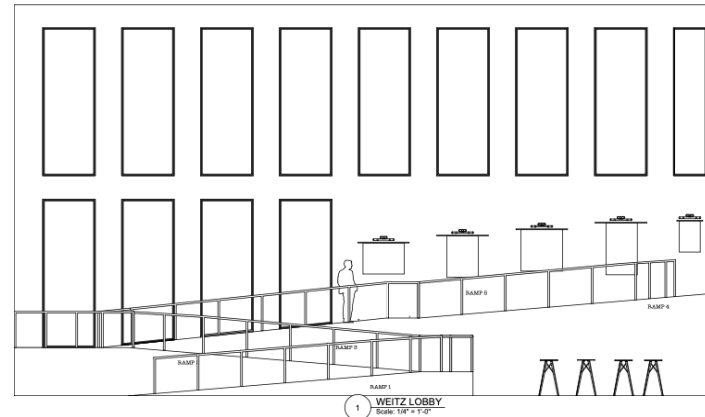
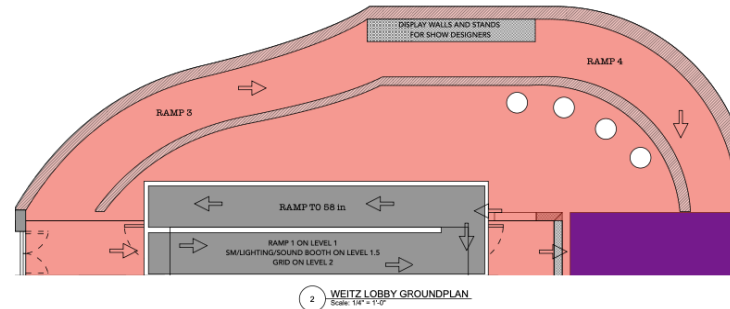


# RENOVATIONS-

## NOTES:

1. LOBBY SPACE IS EXPANDED TO THE EDGE OF THE PORTICO.
2. LOBBY SPACE INCLUDES A SERIES OF 5 RAMPS TO THE BOOTH LEVEL FOR INCREASED ACCESSIBILITY.
3. STANDING TABLES ON THE GROUND LEVEL INVITE PATRONS TO MINGLE AND GATHER BEFORE AND AT INTERMISSION FOR SHOWS.
4. ART INSTALLATIONS AND DISPLAY MATERIALS CAN BE DISPLAYED ALONG THE RAMP WITH PROPER LIGHTING AND EASY INTERCHANGABILITY.
5. ALL RAMPS ARE  
LESS THAN OR EQUAL TO 28in rise  
LESS THAN OR EQUAL TO 4.76° slope  
LESS THAN OR EQUAL TO 8.33%  
elevation grade  
MIN 36 IN WIDTH - 48in.
6. WINDOWS ALL FACE THE FRONT EXTERIOR OF THE BUILDING.
7. HANDRAILS EXTEND THE LENGTH OF THE RAMPS.

VECTORWORKS EDUCATIONAL VERSION



VECTORWORKS EDUCATIONAL VERSION

Drawn By:

**OU  
Renovation  
Challenge  
Team**



Project:

**ASTC  
Renovation  
Project**

Purpose:

**RENO LOBBY**

Date:

**2/2/2025**

Scale:

**1/8" = 1'-0"**



# RENOVATIONS-

VECTORWORKS EDUCATIONAL VERSION

## NOTES:

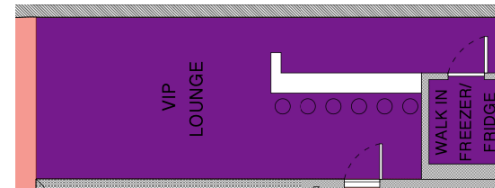
1. THE VIP LOUNGE IS A FULLY NEW ADDITION TO THE WEITZ TO ACCCOMODATE VIP SPONSORS AND DONORS TO THE ARTS AND PROVIDE A MORE HOSPITABLE AUDIENCE EXPERIENCE.

2. THE RAMPS IN THE SPACE PROVIDE ACCESIBILITY TO THE GRID AND INTERMINGLING BETWEEN STUDENTS AND DONORS.

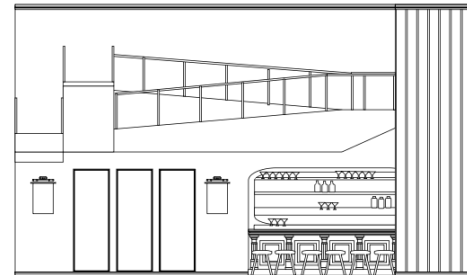
3. TWO DISPLAY BOARDS PROVIDE ROOM FOR ART EXHIBITS OR INFORMATIONAL GRAPHICS.

4. WINDOWS IN THE SPACE PEAK OUT TO WALKWAYS AND PROVIDE NATURAL LIGHT FOR THE BAR INTERIOR. THESE WINDOWS ARE TO BE EQUIPPED WITH FULL BLACKOUT SHADES FOR STAGING PURPOSES AS THE SPACE HAS A DOOR CONNECTING IT TO THE WEITZ STAGE.

5. THE VIP LOUNGE HAS A FULL BAR AND SHOULD BE STOCKED WITH SHOW SPECIFIC SPECIAL COCKTAILS AND OTHER NON ALCOHOLIC BEVERAGES.



Scale: 1/8" = 1'-0"  
1  
VIP LOUNGE GROUNDPLAN



2  
Scale: 1/8" = 1'-0"  
VIP LOUNGE FRONT VIEW

VECTORWORKS EDUCATIONAL VERSION

Drawn By:

**OU  
Renovation  
Challenge  
Team**



Project:

**ASTC  
Renovation  
Project**

Purpose:

**RENO VIP LOUNGE**

Date:

**2/2/2025**

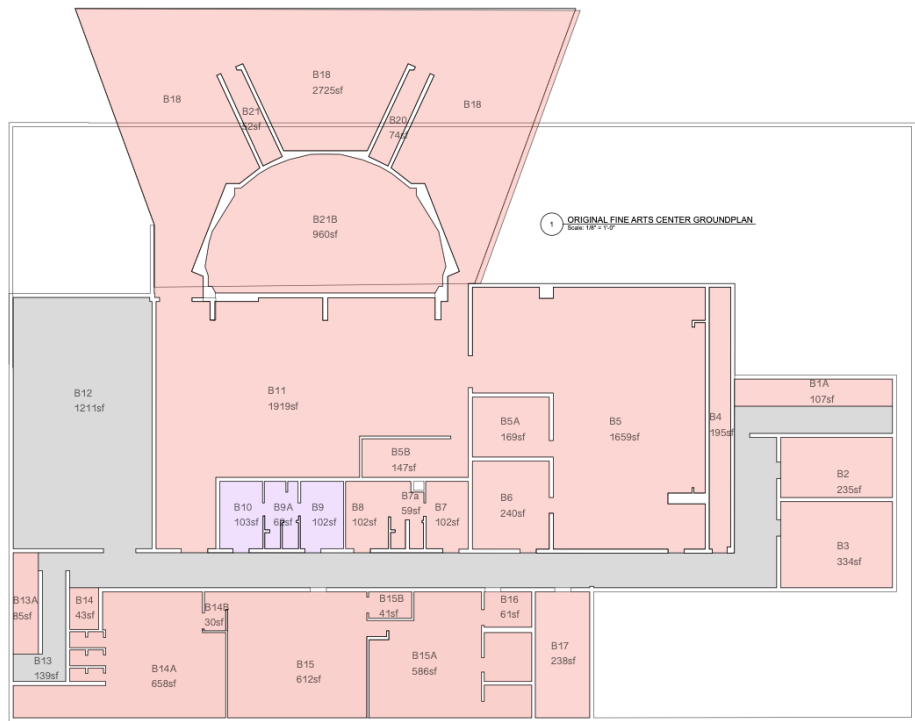
Scale:

**1/8" = 1'-0"**



# RENOVATIONS- FLOOR 00

VECTORWORKS EDUCATIONAL VERSION



VECTORWORKS EDUCATIONAL VERSION

Drawn By:

**OU  
Renovation  
Challenge  
Team**



Project:

**ASTC  
Renovation  
Project**

Purpose:

**OG 00 GROUNDPL**

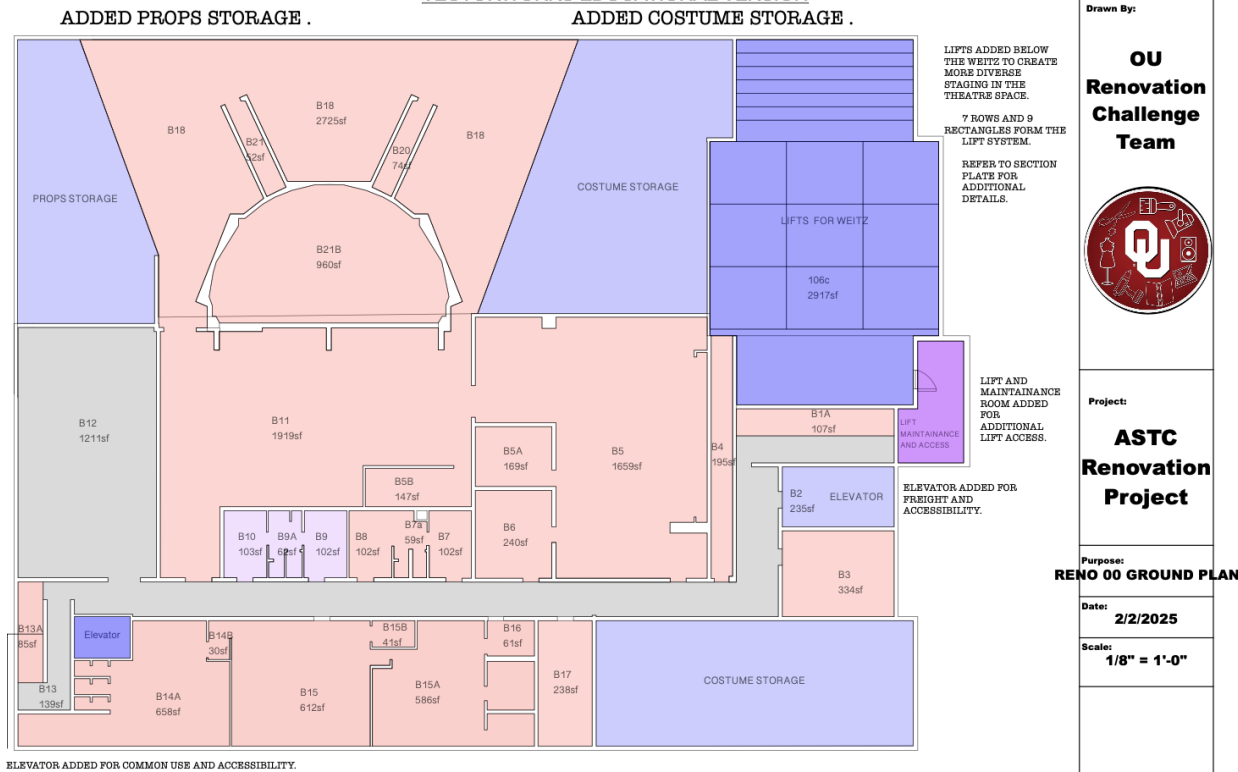
Date:

**2/2/2025**

Scale:

**1/8" = 1'-0"**

VECTORWORKS EDUCATIONAL VERSION



VECTORWORKS EDUCATIONAL VERSION

Drawn By:

**OU  
Renovation  
Challenge  
Team**



Project:

**ASTC  
Renovation  
Project**

Purpose:

**RENO 00 GROUND PLAN**

Date:

**2/2/2025**

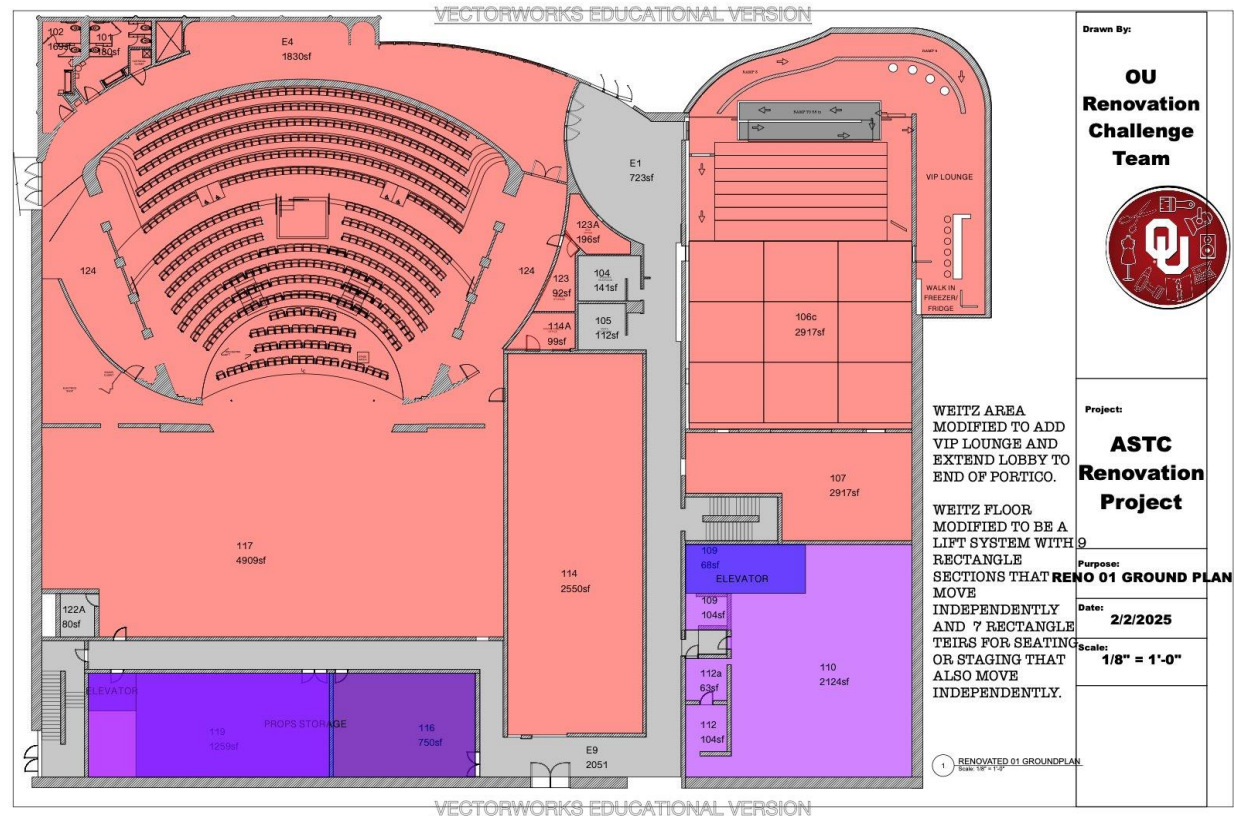
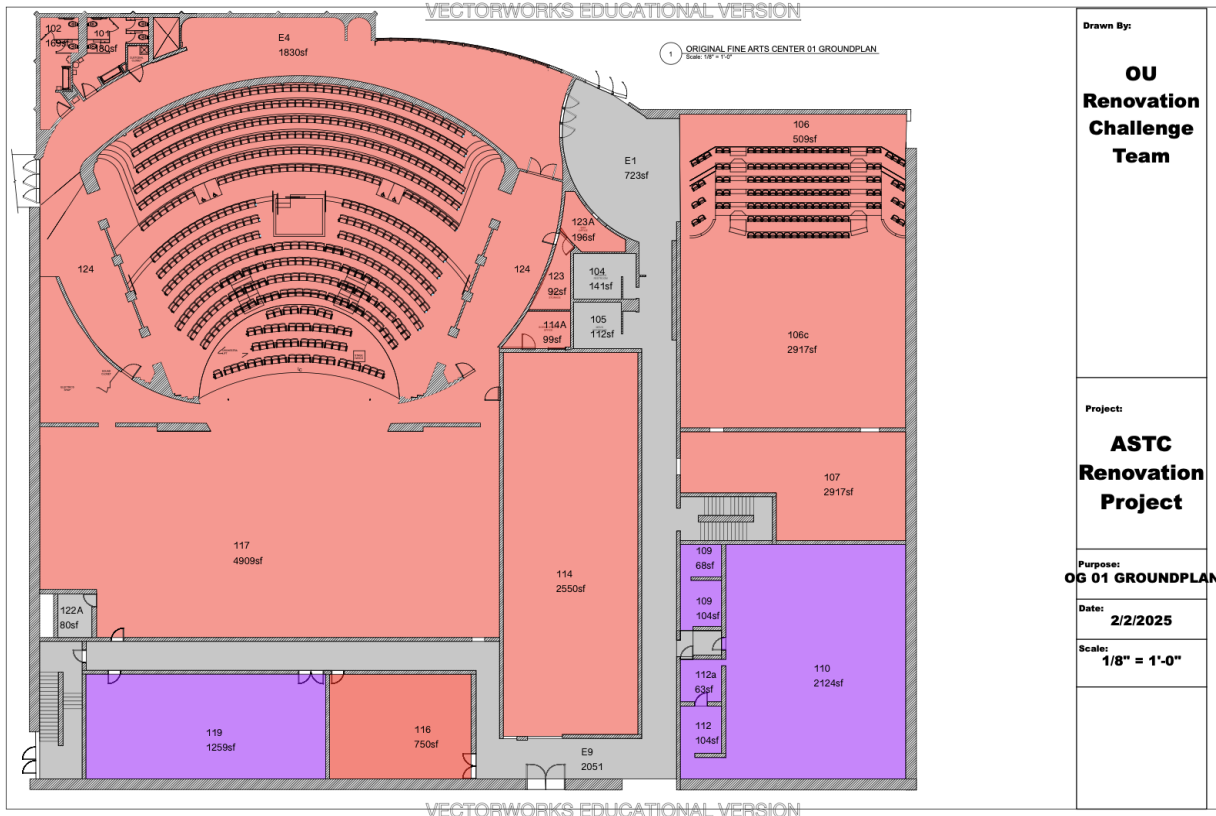
Scale:

**1/8" = 1'-0"**



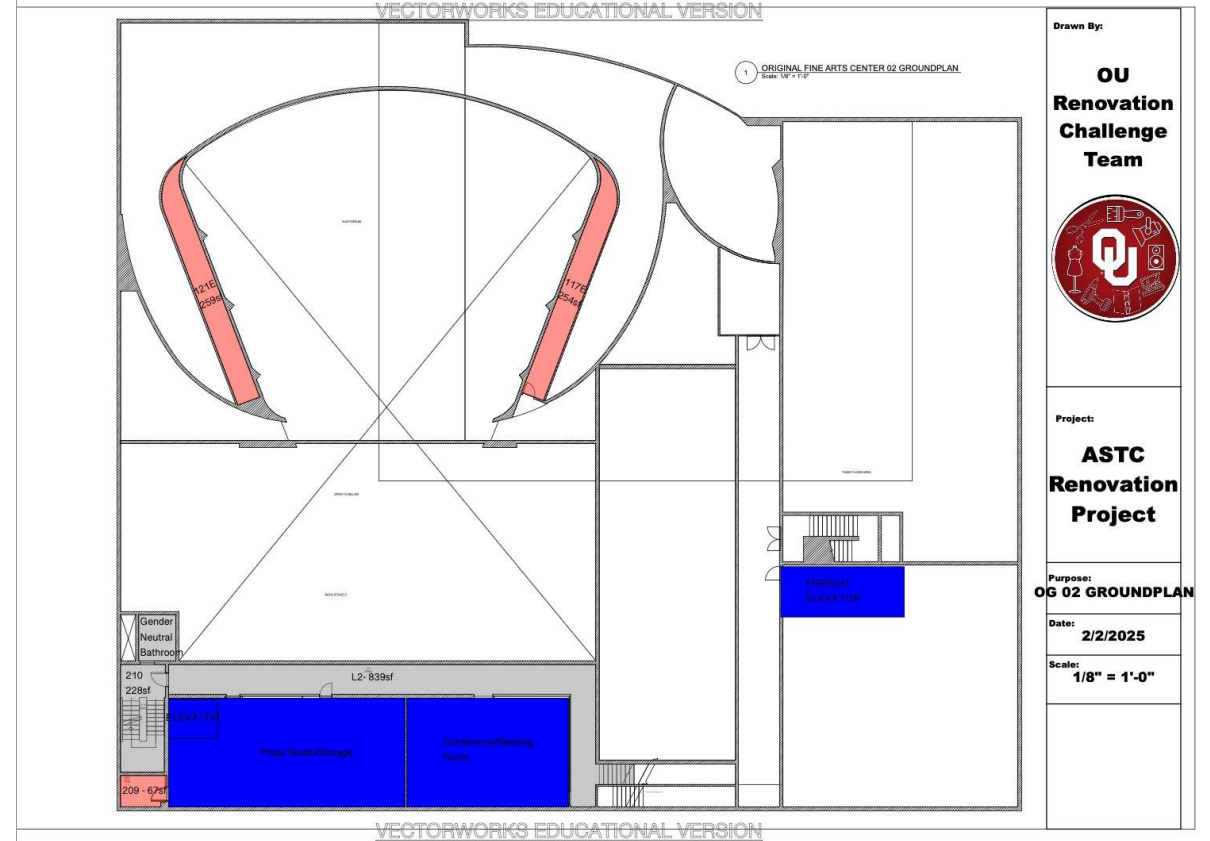
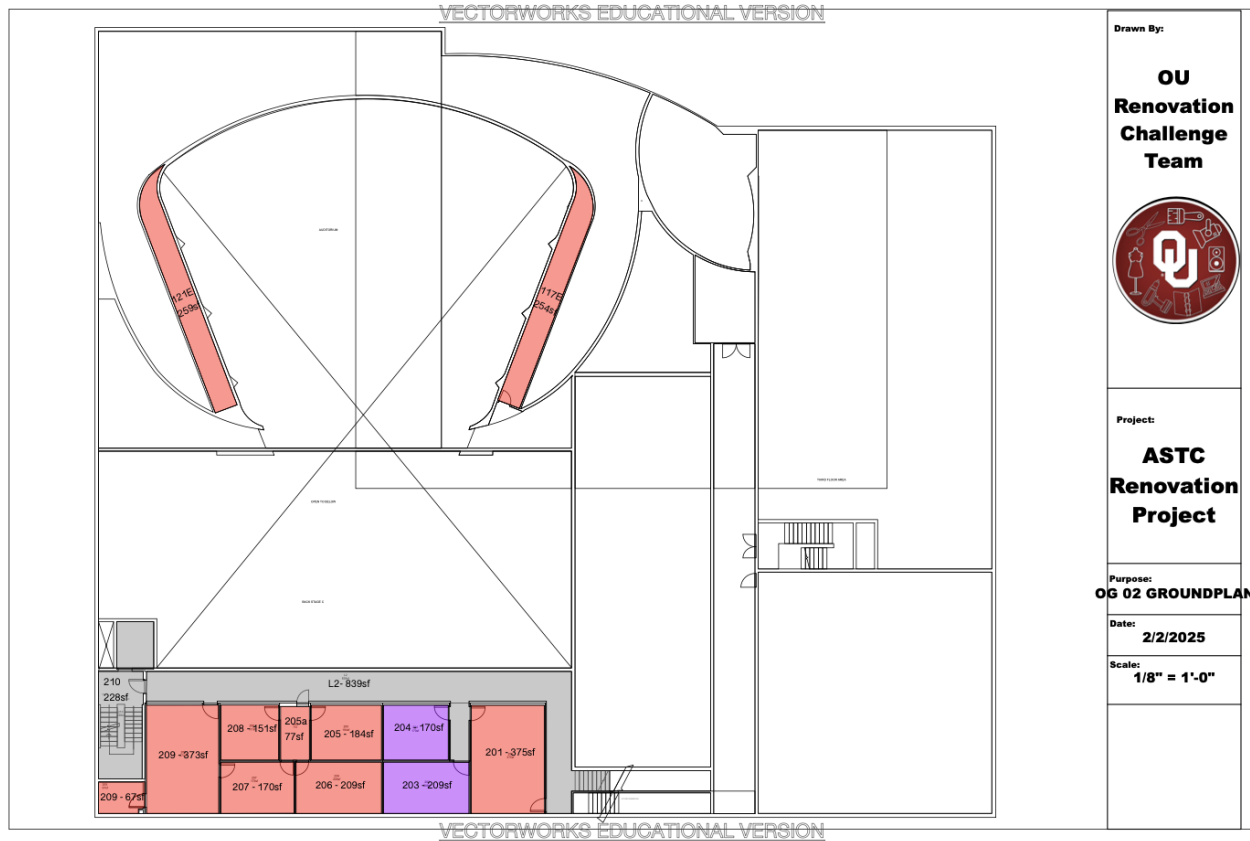


# RENOVATIONS- FLOOR 01

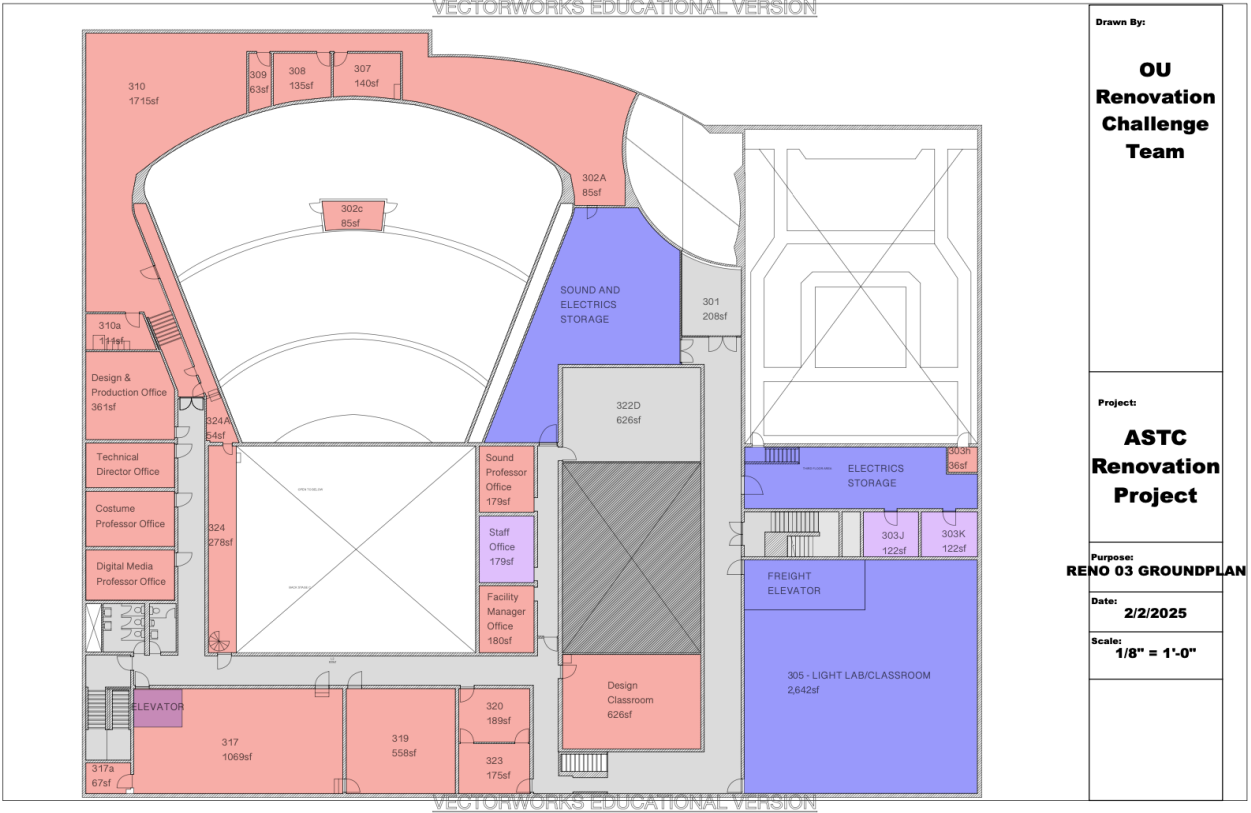
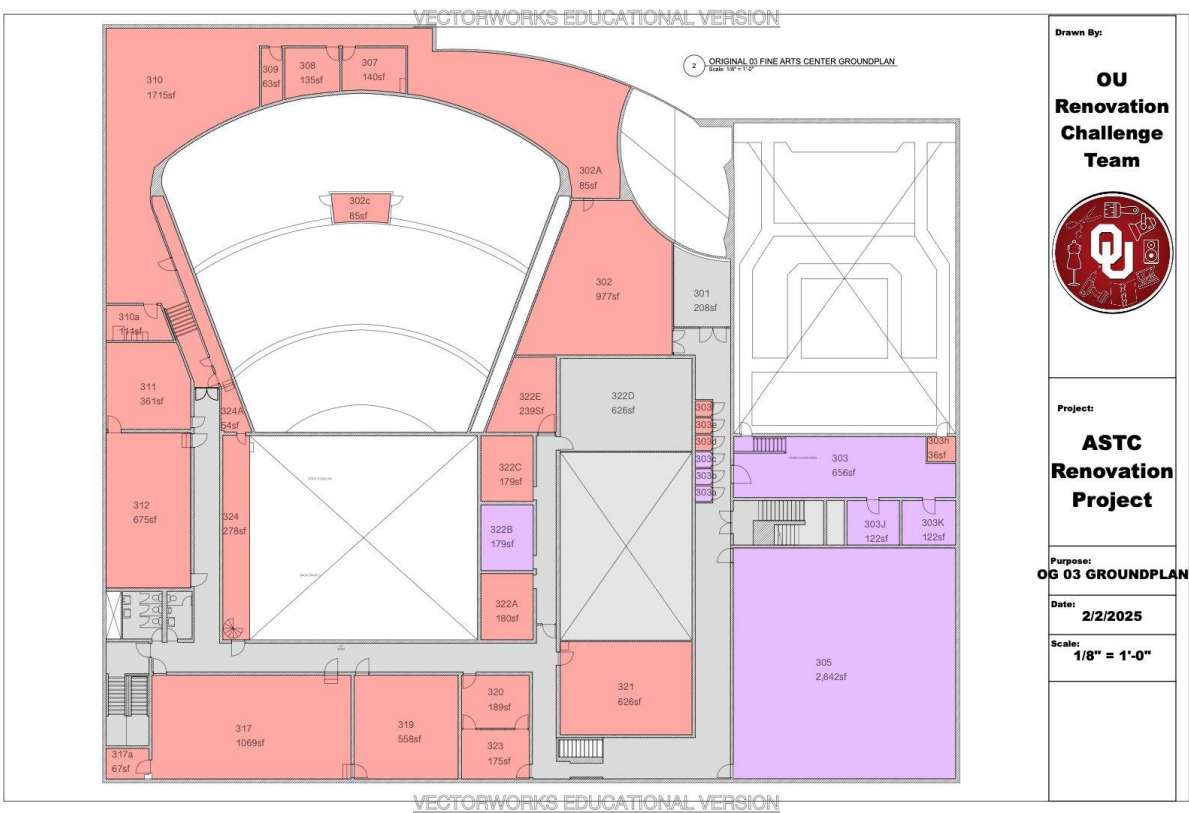




# RENOVATIONS- FLOOR 02



# RENOVATIONS- FLOOR 03



# RENOVATIONS

- With the intention of both renovating and creating a new building for the needs of the College of Fine Arts, adding additional staff is another factor to think about
- When thinking of what to move to the new building, we wanted to think of proximity of program needs, so including all performance faculty and staff with the acting classrooms, warm up rooms for dance studios, and a rehearsal hall big enough for musical theatre productions to use



# NEW BUILDING PROPOSAL



# NEW BUILDING

- The new building will house various spaces necessary for the programs within the college of fine arts
- There would be 4 dance studios, including warm up spaces for the dancers and spring floors
- Now that the Fine Arts Center holds mostly production and support spaces for productions, this new building houses more acting classrooms and offices for acting faculty and staff to all be in the same building
- One of the biggest goals of this new building is to anticipate the growth of the school, and have enough space to support that education





# NEW BUILDING RENDERING

